



Providing sustainable energy solutions worldwide

Installation- and maintenance instruction
BG 700 M



Manualer på övriga språk

www.bentone.com/nedladdning
eller scanna QR-koden

Skriv in brännarens artikelnummer som finns på din
typskylt (se bild) och välj ditt språk

Manuals in other languages

www.bentone.com/download
or scan QR-code

Enter the burner's article number on your data plate
(see picture) and select language.

Gebrauchsanweisungen in anderen Sprachen.

www.bentone.com/download
oder scannen Sie den QR-Code



Geben Sie die Artikelnummer des Brenners auf Ihrem Typenschild ein
(siehe Bild) und wählen Sie die Sprache aus.

Manuels dans d'autres langues.

www.bentone.com/download
ou scannez le code QR

Saisir le numéro d'article du brûleur
sur votre plaque signalétique (consultez l'illustration)
et sélectionnez la langue.

exempel example Beispiel

352011030141	Serial no. 1234567	Man.Year 2019
Designation	BF 1 KS 76-24	
Type	BF 1	
Model	BF 1 KS 76-24	
Cap. Min-Max	LIGHT OIL 35-90kW 1,25-6,0 cSt 7-14bar	
Main supply	1~230V 1,0A 50Hz IP 20	
Motor supply		
MADE IN SWEDEN BY		

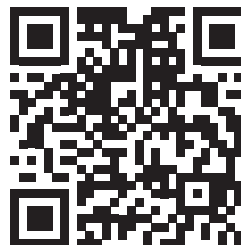


Table of contents

1. General Information	4	10. Control	38
2. Technical data BG700	7	10.1 Technical data	38
2.1 Burners are intended for use at:	7	10.2 LED indicator lamps	38
2.2 Dimensions	7	10.3 Explanation of the different sequence modes	39
2.3 Description BG700 M	10	10.4 BurnerPro LED fault/lock code table	40
2.4 Description BG700-2	11	10.5 Leakage control Dungs VPS 504	43
3. General instructions	12	12. Preface	45
3.1 General instructions	12	11. JUMO dTRON 316	45
3.2 Installation and maintenance instructions	12	13. Identifying the instrument version	46
3.3 Instructions	12	14. Mounting	47
3.4 Inspection and maintenance	12	14.1 Preparation	47
3.5 Start up	12	14.2 Fitting in position, Type 703042/43/44	47
3.6 Commissioning of installation	12	14.3 Fitting in position, Type 703041	47
4. Installation	13	15. Electrical connection	48
4.1 Delivery check	13	15.1 Connection diagram for Type 703041	48
4.2 Preparations for installation	13	15.2 Connection diagram for Type 703042/43/44	49
4.3 Gas supply	13	16. Displays and keys	50
4.4 Electric connection	13	17. Operation	51
4.5 Skeleton diagrams	14	17.1 Level concept	51
4.6 Handling and lifting instruction	15	17.2 Level inhibit	51
4.7 Mounting on the boiler	16	17.3 Entering times	52
4.8 Inspection of gas nozzle before commissioning	17	17.4 Operation of the fixed-setpoint controller	52
4.9 Leakage control	18	17.5 Operation of the program controller	53
4.10 Gas nozzle	19	17.6 Operator level „OPr“	54
4.11 Setting Air damper	20	18. Parameter level „PArA“	54
4.12 Damper motor, air volume	20	19. Configuration level „ConF“	55
4.13 Adjustment of gas flow	20	19.1 Analog inputs „InP“	55
5. Setting the burner	21	20. 9 Configuration level „ConF“	56
5.1 Setting the air pressure switch	21	20.1 Controller „Cntr“	56
5.2 Setting the min. gas pressure switch	22	20.2 Generator „Pro“	56
5.3 MB-VEF BO1, 415 - 425	23	20.3 Utgångar „OutP“	57
5.4 Recommended excess air when using default setting	26	20.4 Display „diSP“	57
5.5 Determining the gas quantity for the system	26	21. Autotuning	58
5.6 Calculating the quantity of gas supplied	28	22. Alarms	58
6. Service	29	23. Troubleshooting	59
6.1 Servicing the combustion assembly	29	24. General instructions for gasburners	62
6.2 Servicing air dampers	30	25. EU Declaration of conformity	64
6.3 Replacement of damper motor, air	31		
6.4 Vibration	32		
6.5 Flame monitoring and ionisation current check	33		
6.6 UV detector	33		
7. Handing over of the installation	34		
8. Fault location, functional troubles	34		
9. Electric equipment	35		
9.1 Safety system	35		
9.2 Wiring diagram BP	36		
9.3 List of components	37		

1. General Information

This Installation and Maintenance manual:

- is to be regarded as part of the burner and must always be kept near the installation site
- is intended for use by authorised personnel
- must be read prior to installation
- must be observed by all who work with the burner and associated system components
- work with the burner may only be carried out by certified installers/ personnel

Enertech AB is not liable for any typographical errors and reserves the right to make design changes without prior notice.

Safety instructions

- The burner may only be used for its intended purpose in accordance with the product's technical data.
- The burner may only be installed and operated by authorised personnel.
- The product is packaged to prevent damage from occurring during handling. Handle the product with care. Lifting equipment must be used to lift larger packages.
- The products must be transported/stored on a level surface in a dry environment, max. 80% relative humidity, no condensation. Temperature -20 to +60 °C.
- Check that the burner is compatible with the boiler's output range.
- All components must be installed without being bent, twisted or subjected to mechanical or thermal forces which can affect the components.
- The burner must be installed so that it complies with local regulations for fire safety, electrical safety, and fuel distribution.
- The gas outlet from the pressure regulator shall be configured in accordance with applicable regulations and lead to a safe area.
- Make sure when installing the equipment that there is enough space to service the burner.
- Permitted temperature during operation -10 to +60 °C. Max 80% relative humidity, no condensation.
- The installer must ensure that the room has adequate air supply.
- The room must comply with local regulations pertaining to its intended use.
- The installation site must be free of chemicals.
- Burner pipes, fan wheels and air dampers may contain sharp edges.
- The surface temperature of the burner's components can exceed 60 °C.
- Caution: The burner has moving parts, and there is risk of crushing injuries.



- The electrical installation must be professionally carried out in accordance with applicable high voltage regulations, as per Enertech's recommendations.
- Before servicing, shut off the fuel supply and turn off the power to the burner.
- Seal inspections must be performed during installation and servicing to prevent gas leakage.
- Care should be taken by the installer to ensure that no electrical cables or fuel lines are crushed or otherwise damaged during installation or servicing.
- If the boiler is equipped with an access hatch, this must be equipped with a hatch opening switch connected to the burner's safety system.
- When in operation, the burner's noise level can exceed 85 dBA. Use hearing protection.
- The burner must not be put into operation without proper safety and protection devices.
- A Class BE fire extinguisher is recommended.
- It is forbidden to alter the design or use accessories which have not been approved by Enertech in writing.
- Prior to operation, the following points must be checked:
 - fitting and installation work has been completed and approved
 - electrical installation has been correctly performed
 - flue gas ducts and combustion air ducts are not blocked
 - all actuators and control and safety devices are in working order and correctly set



Actions to take if you smell gas

Turn off the equipment and the boiler. Open windows and doors. Prevent open flames or sparking, e.g. do not turn lights on or off, do not use any electrical appliances, do not use mobile phones. Open windows and doors. Close the gas ball valve. Warn residents; do not use doorbells. Evacuate the building. Notify the installer or gas supplier once the building has been evacuated.

Burner servicing schedule

Servicing must be carried out once a year or after 3000 hours of operation

Burner	1 year	3000 hrs
Inspection of electrical installation	1 year	3000 hrs
Leakage check	1 year	3000 hrs
Filter	1 year replacement at $\Delta p > 10$ mbar	3000 hrs replacement at $\Delta p > 10$ mbar
Electrodes	Replacement/Cleaning 1 year	Replacement/Cleaning 3000 hrs
Brake disc	Replacement/Cleaning 1 year	Replacement/Cleaning 3000 hrs
Motor	1 year	3000 hrs
Fan wheel	1 Year Replacement when cleaning needed/ imbalance	3000 h Replacement when cleaning needed/ imbalance

Component replacement intervals

Control system	10 years	250,000 starts
Valve control system	10 years	250,000 starts
Pressure switch	10 years	250,000 starts
Ignition system with flame guard	10 years	250,000 starts
UV flame sensor	10000 hrs	N/A
Gas pressure regulators	15 years	N/A
Gas valve without seal testing	10 years	250,000 starts
Gas valve with seal testing	Replacement upon fault detection	N/A
Gas pressure switch	10 years	250,000 starts
Safety blow-off system	10 years	N/A
Damper motor	N/A	500,000 starts
Contactors	10 years	500,000 starts



The burner and its components must be recycled according to applicable regulations.

Delivery check

- Make sure everything is delivered and the goods have not been damaged during transit.
- If something is wrong with a delivery, report it to the supplier.
- Transport damage must be reported to the shipping company.

2. Technical data BG700

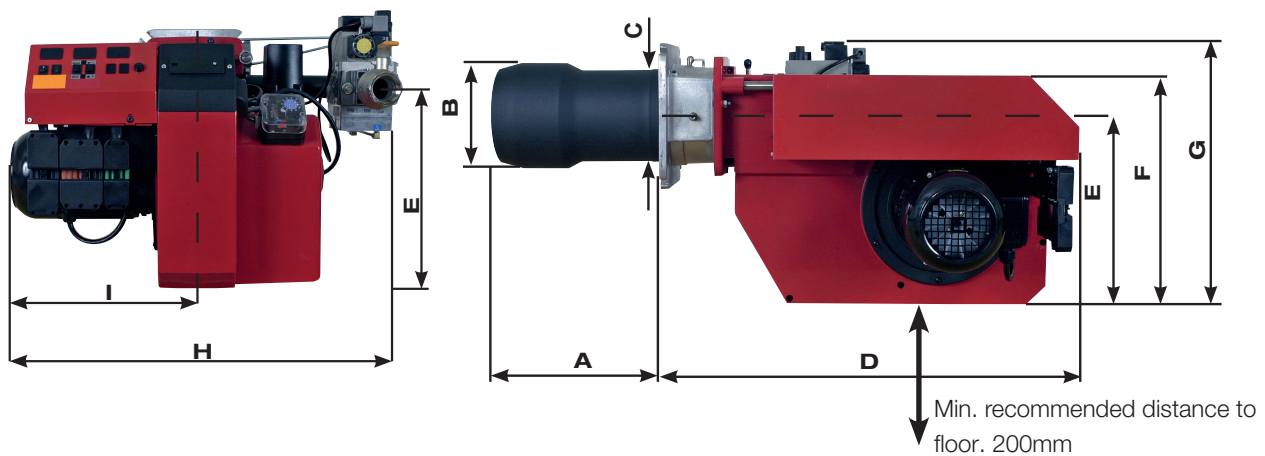
2.1 Burners are intended for use at:

- Water heating generators

2.2 Dimensions

- Connection 1½-3"

Dimensions stated in mm



Type		Length of burner tube	Flange measure A	Burner tube measure B	Burner tube measure C
BG 700	Standard 1	363	328	220	205
	Standard 2	663	628		

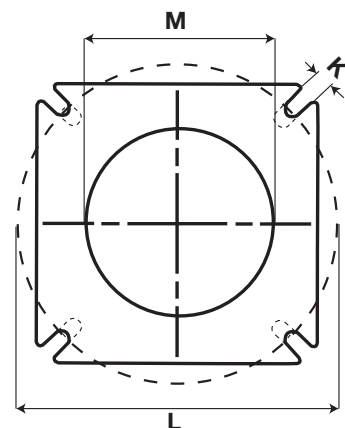
	D	E	F	G	H	I
BG 700	820	410	510	*730	*970	420

* The above dimensions are max. measurements. Depending on the components used, the measurements may vary.

2.2.1 Heat generator connection dimensions

	K	L	M
BG 700	M14	(Ø 280) Ø320-380	*** (Ø 210) Ø 230

***Dimensions when installing blast tubes from the inside of the heat generator



2.2.2 Capacity range

Capacity kW	Gas quantity at min. power Nm ³ /h ¹⁾	Gas quantity at max. power Nm ³ /h ¹⁾	Max. connection pressure mbar	Min connection pressure mbar
BG 700				
G20 300-1500	31.2	157.1	360	see data plate
G25 300-1500	36.2	183		
G31 380-1650	15,4	67.1		

Lower heat value Hu at normal state 15°C and 1013.25 mbar EN676				
Grade of gas		kWh/Nm ³	MJ/Nm ³	kcal/Nm ³
Natural gas	G20	9.5	34.02	8126
Natural gas	G25	8.2	29.25	6986
Butane	G30	32.5	116.09	27728
Propane	G31	24.6	88.00	21019

Gas quantity and capacity vary according to grade of gas and connection pressure.

2.2.3 Appliance categories

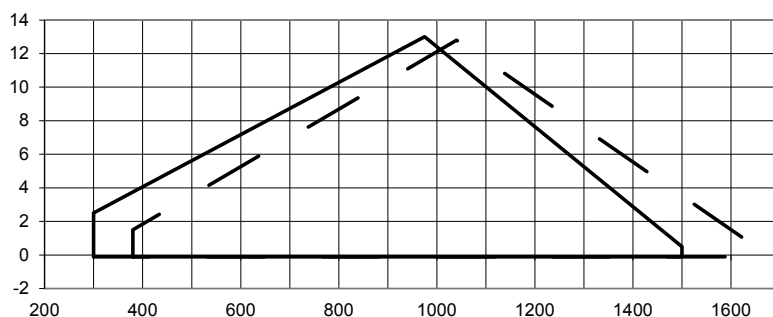
Only dry gas is permitted for use

Geräte-kategorien Appliance categories	Versorgungsdrücke Supply pressures	Bestimmungsländer Countries of destination
II _{2R/3R}	40-360mBar	"BG, CZ, DE, EE, ES, FR, GR, HU, IS, IT, LU, LV, NO, PT, SI, All countries"
II _{2H3P}	40-360mBar	"AT, CH, CY, DK, FI, LT, RO, SE, SK"
II _{2H3P}	40-360mBar	GB, IE,
II _{2L3P}	40-360mBar	NL, RO
II _{2E3P}	40-360mBar	PL
I _{2E@}	40-360mBar	BE
I _{3P}	40-360mBar	BE

BG 700

G20, G21 300-1500 kW

G31 380-1650



Do not exceed working field

2.2.4 Electric Specification

Burner correspond to IP20

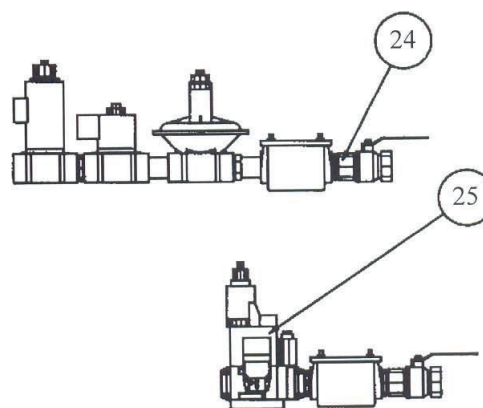
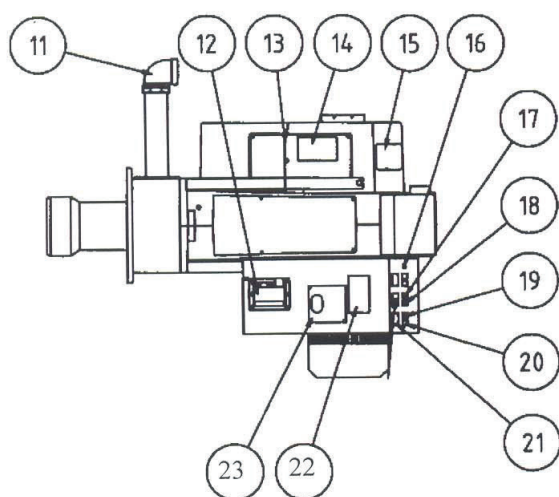
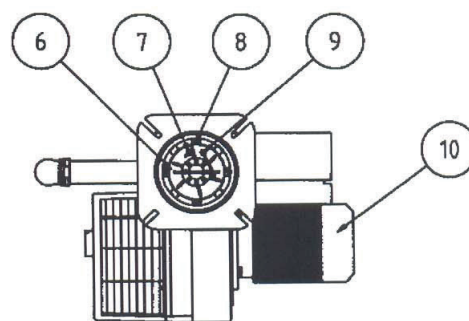
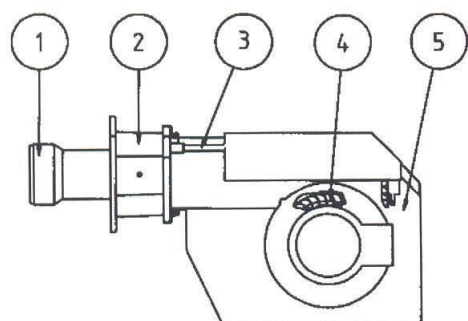
Type	BG 700
Motor	230/400V 10,4/5,4A 50Hz
The recommended main fuse motor	C16A
Control power	1~230V 2,5A 50Hz
Sound	93 dBA ± 0,5 dBA

Measurements according to EN 3746: 2010

Alt.1 The sound level of the burner can be reduced by equipping the burner with silencer. Installation must be done so it does not prevent air supply to the burner.

Alt.2 The burner's noise level can be reduced by connecting the burner's air intake to the air duct that opens into an appropriate location. Installation must be done so it does not prevent air supply to the burner.

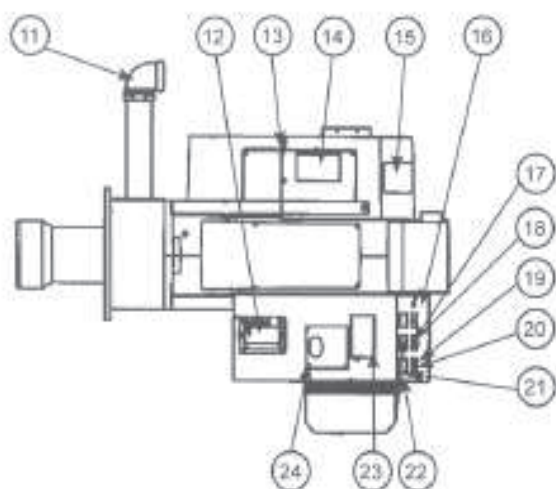
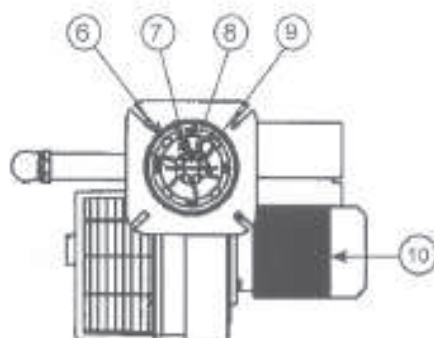
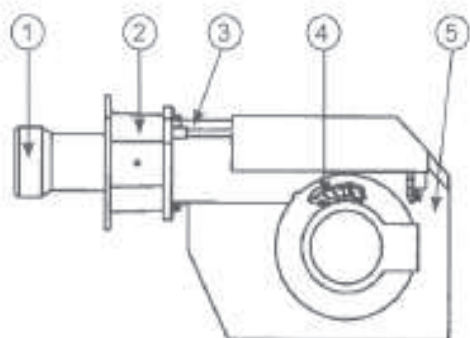
2.3 Description BG700 M



Components

- | | | |
|-------------------------|---|--|
| 1. Flame cone | 11. Connection gas fittings | 19. Indicating lamp |
| 2. Flange | 12. Ignition transformer | 20. Switch 0-1 |
| 3. Guide bar | 13. Air damper | 21. Time meter (option) |
| 4. Fan wheel | 14. Air damper motor | 22. Contactor with thermal overload protection |
| 5. Fan house | 15. Air pressure switch | 23. Control box |
| 6. Shrouded disc | 16. Fuse holder | 24. Gas train |
| 7. Ignition electrode | 17. Change-over switch increase-decrease | 25. MultiBloc |
| 8. Nozzle | 18. Change-over switch manually-automatically | |
| 9. Ionisation electrode | | |
| 10. Motor | | |

2.4 Description BG700-2



Components

- | | | |
|-------------------------|-----------------------------|--|
| 1. Flame cone | 10. Motor | 19. Indicating lamp Stage I |
| 2. Guide bar | 11. Connection gas fittings | 20. Switch I-II |
| 3. Electric panel | 12. Ignition transformer | 21. Time meter, stage 1 |
| 4. Fan wheel | 13. Air damper | 22. Time meter, stage 2 |
| 5. Fan house | 14. Air damper motor | 23. Contactor with thermal overload protection |
| 6. Shrouded disc | 15. Air pressure switch | 24. Control box |
| 7. Ignition electrode | 16. Fuse holder | 25. Gas train |
| 8. Nozzle | 17. Indicating lamp Stage 2 | 26. MultiBloc |
| 9. Ionisation electrode | 18. Switch I-II | |

3. General instructions

3.1 General instructions

The installation of the gas burner must be carried out in accordance with current regulations and standards. The installers of gas burners should therefore be acquainted with all regulations and ensure that the installation complies with the requirements. The installation, mounting and adjustment should be made with the greatest care and only the correct gas should be used.

3.2 Installation and maintenance instructions

The maintenance instructions supplied with the burner must be kept at an easily accessible location in the boiler room.

3.3 Instructions

The user should be thoroughly instructed in the function of the gas burner and the whole installation. The supplier must instruct the user.

3.4 Inspection and maintenance

See service schedule.

3.5 Start up

After the burner has been fitted to the boiler and the electric connection, the leakage control, the venting and the electric function test have been carried out, the burner will be ready for start-up.

However, study the sections dealing with adjustments of multi-bloc, combustion air and combustion head. Open the ball valve and switch on the main switch. If the burner starts the actual adjustment can be made.

3.6 Commissioning of installation

Control of the combustion. The combustion quality is checked by means of a flue gas analysis device. Adjust the burner to appr. 20%

excess air in accordance with the table. Check the flue gas temperature. Calculate the efficiency. Check also the actual gas volume on the gas meter so that the correct input is achieved.

4. Installation

4.1 Delivery check

Check that all has been delivered and that the goods have not been damaged during transport. If that is not the case, please notify the delivery company. Transport damages should be reported to the forwarding agency.

4.2 Preparations for installation

Check that the measurements and capacity range of the burner are compatible with the boiler. The power ratings on the type plate refer to the min. and max. power of the burner.

4.3 Gas supply

For good operating safety, it is important that the gas supply system is installed correctly.

Consider the following:

1. Check that the burner is approved for the gas quality of the installation. If not, please contact the supplier.
2. Check that the gas components of the burner are approved for indicated gas pressure.
3. The gas supply system should be installed in accordance with current standards.
4. Pipe lines should be run so that service on boiler and burner is facilitated.
5. Pipe lines should be run so that eventual contaminants cannot come into contact with the gas components.
6. Gas discharge system must be installed prior to local regulations.

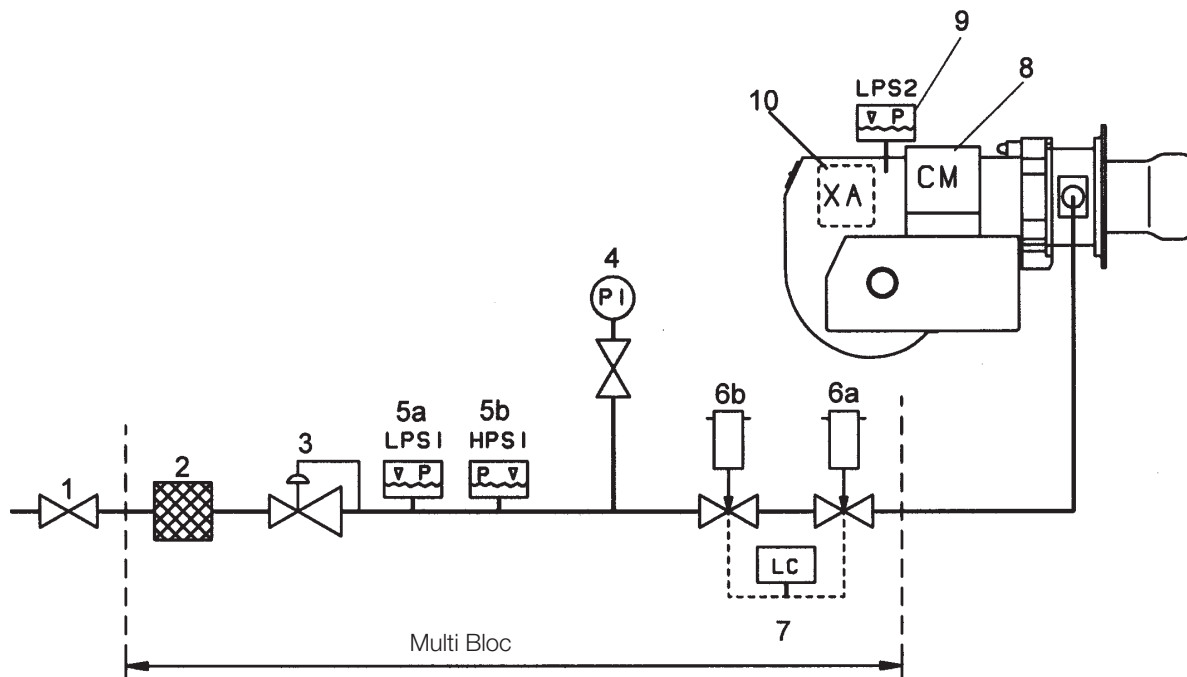
4.4 Electric connection

Before starting the electric installation, the main switch must be turned off. If the boiler has a 7-pole and a 4-pole Eurostecker connector, these usually fit directly to the burner. If not, use the connectors included.
(Refer to connection under Electric equipment)



If an electric connection other than the one recommended by Enertech is used, a risk of damage and injury can arise.

4.5 Skeleton diagrams

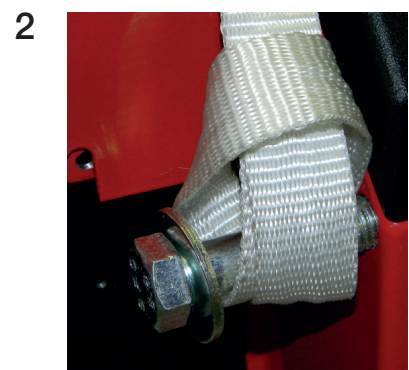
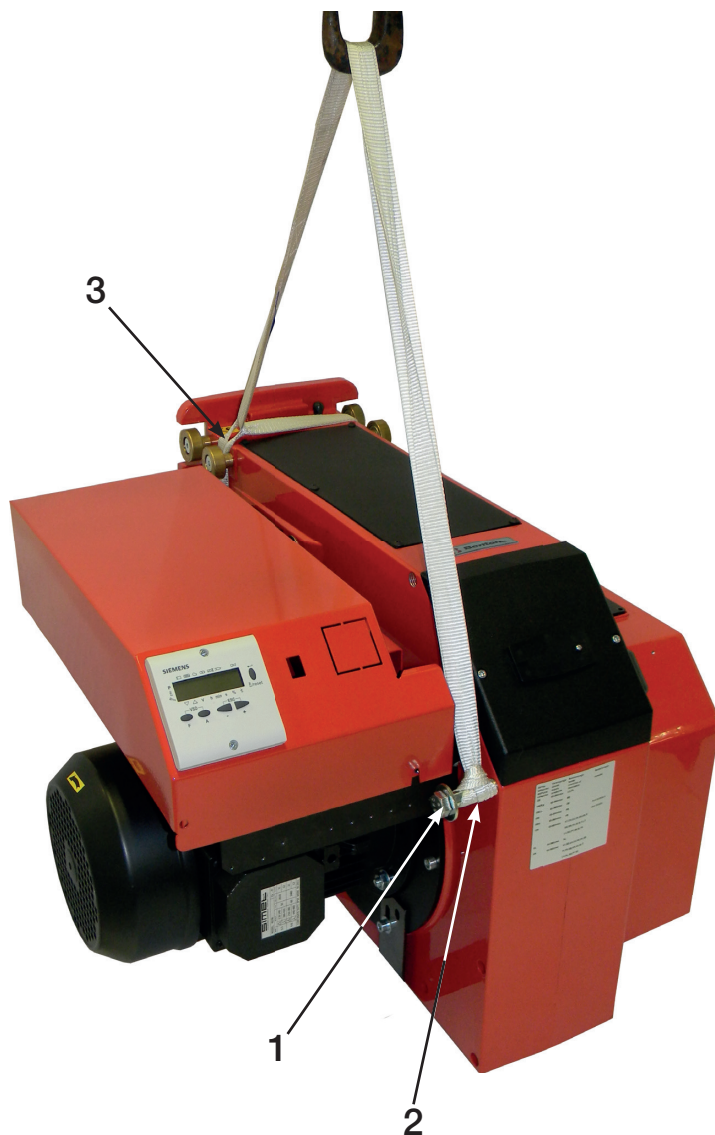


1. Ball valve
2. Filter
3. Governor
4. Pressure gauge with shut-off cock
- 5a. Gas pressure switch, mini
- 5b. Gas pressure switch, maxi
- 6a. Main valve, 2 -stage. When modulating operation is required this valve is equipped with controls for variable opening.
- 6b. Safety valve
- 1)7. Valve proving system
9. Air pressure switch
10. Gas burner control

Pos. 5b, 7: Components not required according to EN 676.

- 1) Required over 1200 kW according to EN 676.hhh

4.6 Handling and lifting instruction



Option

The lifting aids we use here are available as accessory, Figure 1



bild 1

4.7 Mounting on the boiler

Mount the burner to the boiler using 4 bolts. See technical data for the hole pattern.

To make the fitting process easier, it is possible to separate the burner body from the gas flange with the combustion head and valve assembly in place.

Proceed as follows:

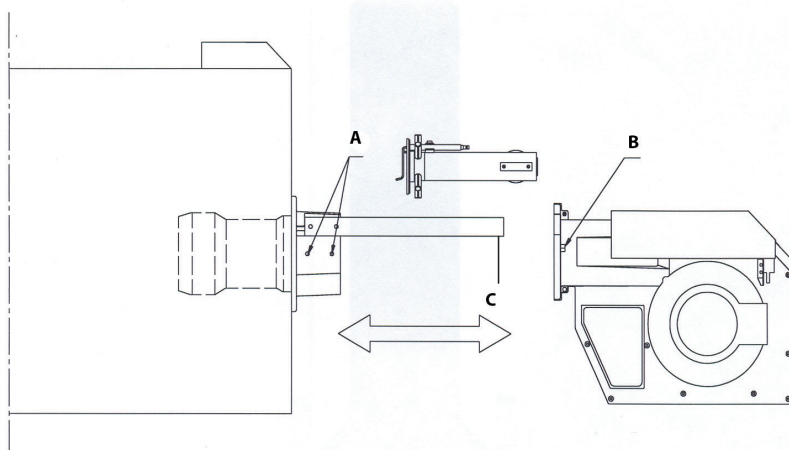
1. Ensure that no power is going to the burner. Break the main current and disconnect the Euro plugs from the burner. NB: If the burner is directly connected, ensure that all components on the burner are without power.
2. Remove the cover plate from the fan housing.
3. Disconnect the electrical cables to the valve assembly and gas damper motor.
4. Undo the screws (B) on both sides.
5. Undo the end stops (C) on the guides.
6. **Disconnect the ignition cable and ionisation cable from the gas nozzle.**
7. Pull out the burner body from the guides and put it in a suitable place.

After separating the burner body and the gas flange, it is easier to mount the gas flange with the burner head and valve assembly to the boiler (loosen the valve assembly if required). Once the gas flange is fitted to the boiler, it is easy to lift the burner body up onto the guides. Assemble the burner in reverse order to its disassembly.



Check the gas tightness.

Service position



For maintenance of the brake plate, nozzles, electrodes etc, when using a long design of the burner tube, you have to remove the nozzle assembly from the connecting pipe and move the assembly backwards in the fan housing (from the boiler).

4.8 Inspection of gas nozzle before commissioning

The gas nozzle can easily be inspected by using the guides on the burner.

Proceed as follows:

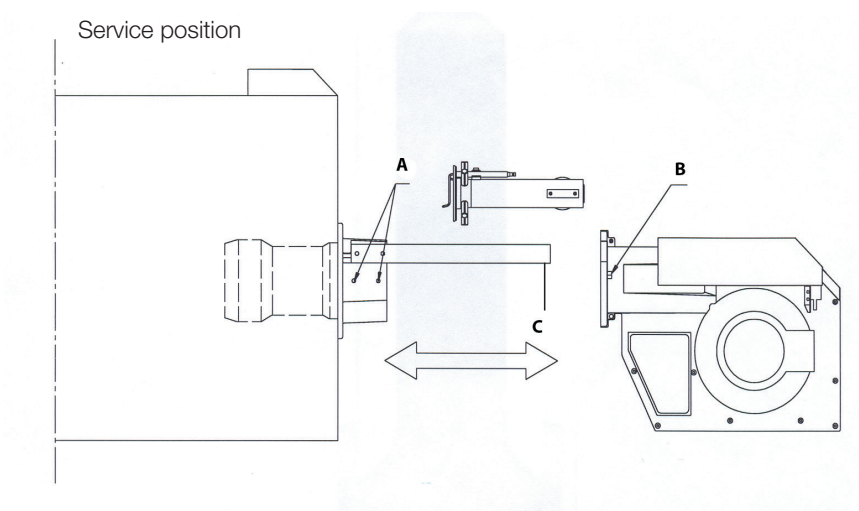
1. Ensure that no power is going to the burner. Switch off the main power supply and disconnect the Euro plugs from the burner.



If the burner is directly connected, ensure that all components on the burner are without power.

2. Remove the cover plate from the fan housing.
3. Disconnect the ignition cable and ionisation cable for the gas nozzle.
4. Ensure there is enough slack in the electrical cables to the valve assembly and gas damper motor to pull out the burner body in the rear position on the guides. If there is not enough slack the cables can be disconnected.
5. Undo the screw (B) on both sides.
6. Pull out the burner on the guides.
7. Undo the screw(s) (A) on the gas flange.
8. Take out the gas nozzle.
9. See section Gas nozzle

Re-assemble the burner in reverse order to that described above. When re-assembling, make sure that the O-ring located between the gas nozzle and the gas flange is in the correct position when the nozzle is re-fitted.



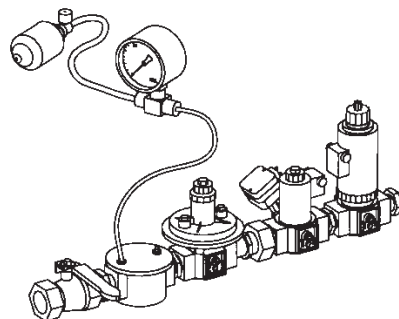
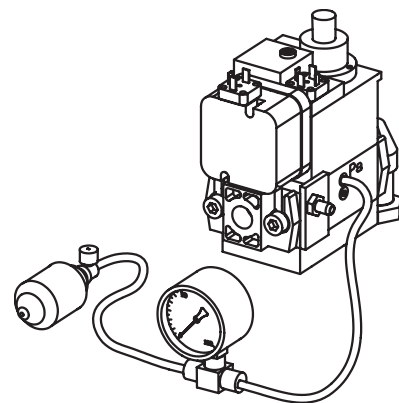
4.9 Leakage control

When making a leakage control of the gas supply system the solenoid valve should be closed. Connect a pressure gauge to the test nipple Pa, see fig. The test pressure in the system should be 1,5x max. inlet pressure or min. 150 mbar. If any leakage, locate the source by means of soapy water or a leak location spray. After tightening repeat the test.

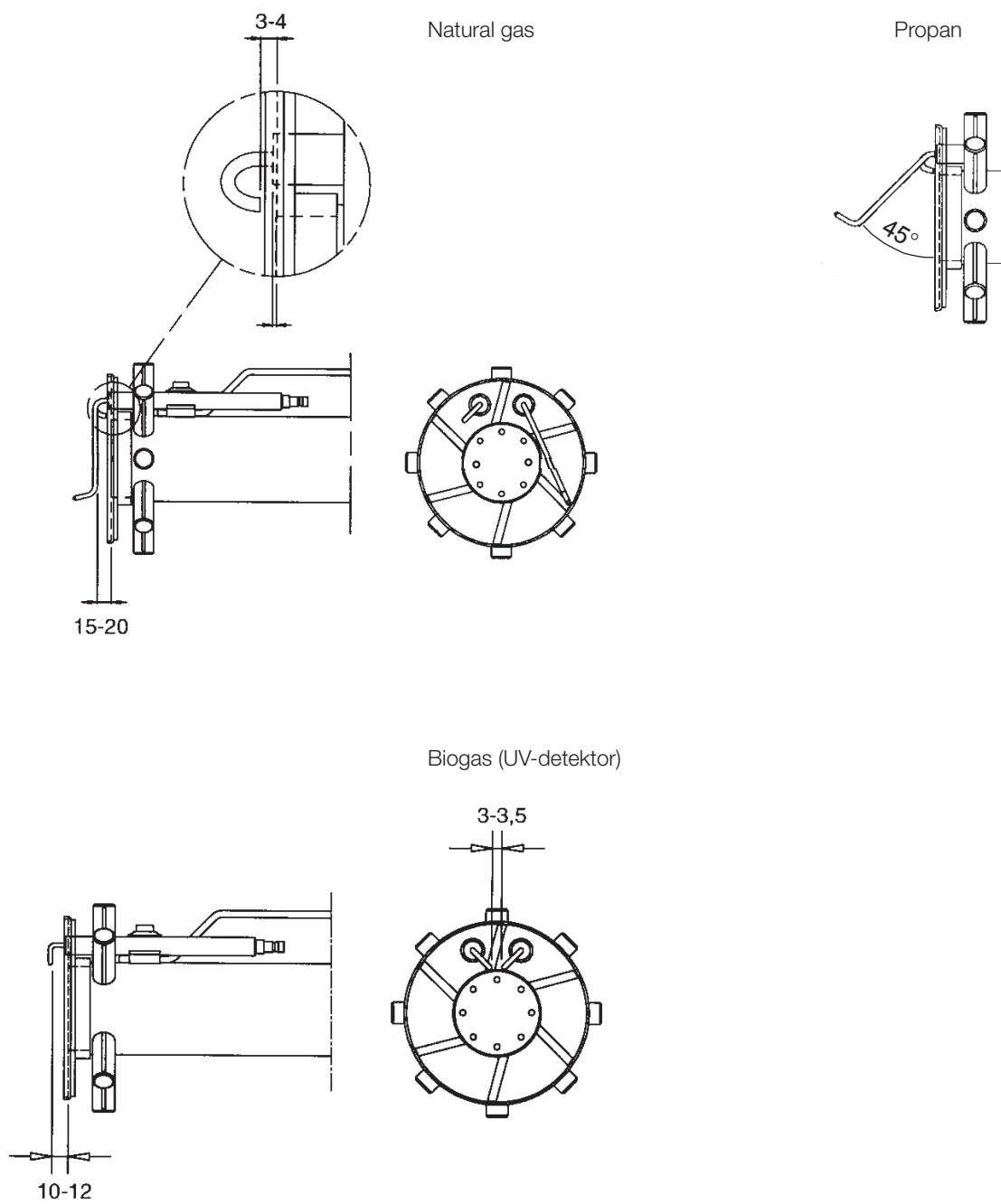
Electric function test:

Ensure that phase and neutral are not reversed. The gas shut-off cock should be closed. To prevent the gas pressure switch from locking out it should be linked temporarily.

After the main switch has been switched on and the thermostats have been adjusted the pre-purging period begins (30-35sec.). At the end of this period the pre-ignition period starts (0,5-2,5 sec. dependent on the design of the gas control). The gas valve is energized and opens and flame is established. At the end of the safety time (2-3 sec.) the gas control locks out. The solenoid valve and the motor will be "dead". Remove the link from the gas pressure switch after the test is finished.



4.10 Gas nozzle



4.11 Setting Air damper

4.12 Damper motor, air volume

Adjust the orange cam for min. load (about 5-10 on scale)

Adjust the red cam for max. load (90°)

The blue cam is factory set for closed position during standstill

The black cam has no function at modulating operation

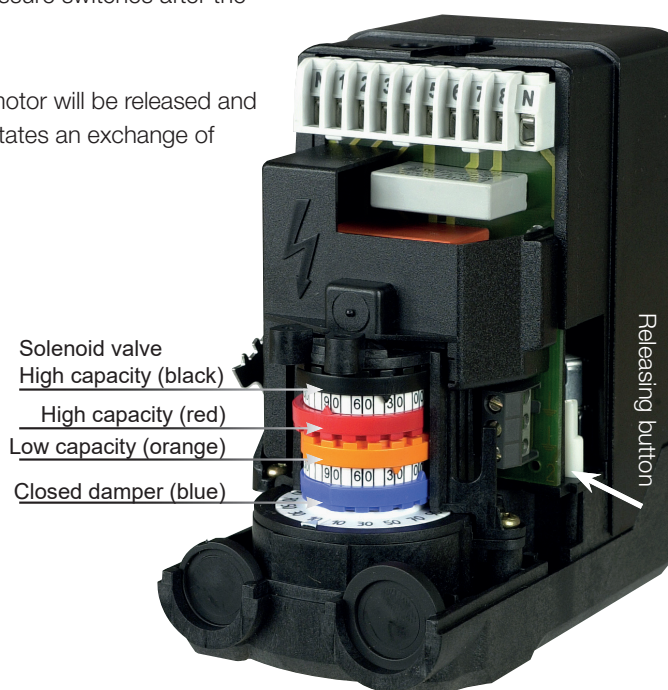
4.13 Adjustment of gas flow

- Before the burner starts vent the lines to make sure that there is gas available at the multibloc
 - Use an allen key size 2,5 mm for adjusting N and V.
 - Connect a pressure gauge for measuring PBr, (advisable to find out if the valves are open)
 - Set the switch in position MAN.
 - Set the gas pressure switch min. and air pressure switch on min. adjustment. Set the gas pressure switch max, if any, on max. adjustment.
 - Start the burner, observe the pressure gauge, if no flame is established and the pressure gauge needle does not flicker, increase N. When the flame is established adjust the gas flow by means of the screw N. Use a flue gas instrument.
 - Change over to max. load, press the switch "increase"
 - Adjust the gas flow with V and check at the same time the combustion values.
 - Go back to min. load and check the combustion value. Adjust if necessary.
 - If necessary repeat the controls of the adjustment made on min. (N) and max. load(V).
 - Increased power on minimum and maximum have now been adjusted by changing the orange cam and red cam. Check the gas flow on the gas meter available on the installation.
 - Note! Do not forget to set the air and gas pressure switches after the adjustment, see special instructions.
- **Releasing button**

By pressing the button and snapping it down, the motor will be released and the damper can easily be turned. This function facilitates an exchange of damper motor.

Releasing button

N.B! The upper position is the standard position!



172 515 15 2018-01-03

5. Setting the burner

5.1 Setting the air pressure switch

The air pressure switch should block the burner if the air quantity supplied for combustion is insufficient. The air pressure switch must be set so that, if there is a defective air supply at the burner's max. or min. capacity, it reacts before the monitored pressure falls so much that it results in poor combustion.

Inställningsområde ca:

LGW 10	1-10	mbar
LGW 50	2,5-50	mbar



Be careful when adjusting the air pressure switch; it contains a live component.

Setting for air pressure switch

1. Remove the protective cover, screw (Y).
2. Start the burner.
3. Carefully turn the scale on the air pressure switch clockwise until the air pressure switch stops the burner. **Is the tolerance on the scale for the min. air pressure switch approx. $\pm 15\%$?**
4. Try to find the pressure at which the burner stops for both the minimum and maximum input power by turning the scale. Make a note of the values and then set the air pressure switch on the basis of the highest pressure noted at which the burner stopped.
5. The air pressure switch should be set to a pressure approx. 10–15% lower than the highest noted pressure at which the burner stopped.
6. After setting the air pressure switch, perform repeated starts and run through the burner's set output range several times. This is to ensure the reliable function of the burner. If breakdowns or interruptions occur, the air pressure switch is probably set to a too narrow position.
7. Fit the protective cover, screw (Y).



172 515 40 2018-01-15

5.2 Setting the min. gas pressure switch

The min. gas pressure switch should react to a burner connection pressure that is too low and in such cases prevent the burner from starting. If the connection pressure to the burner is too low during operation, the min. gas pressure switch should stop the burner. The burner can start again once the connection pressure has risen above the pressure set for the min. gas pressure switch.

Setting for min. gas pressure switch

1. Remove the protective cover, screw (Y).
2. Open the pressure outlet (X) and connect a manometer to measure the connection pressure.
3. Start the burner.
4. Measure and make a note of the connection pressure to the burner during normal operation at the highest input power.
5. Based on the desired connection pressure set, determine the connection pressure at which the gas pressure switch should stop the burner. Set the connection pressure at which the burner is stopped at a level where the burner is stopped before poor combustion occurs.
6. Set the min. gas pressure switch to this value by turning the scale.
7. Check the setting by carefully closing the ball valve while measuring the connection pressure.
8. When the min. gas pressure switch stops the burner, the value measured should then approximately correspond to the setting on the min. gas pressure switch. The tolerance on the scale for the min. gas pressure switch is approx. $\pm 15\%$.
9. Open the ball valve.
10. Remove the pressure gauge and close the pressure outlet (X).



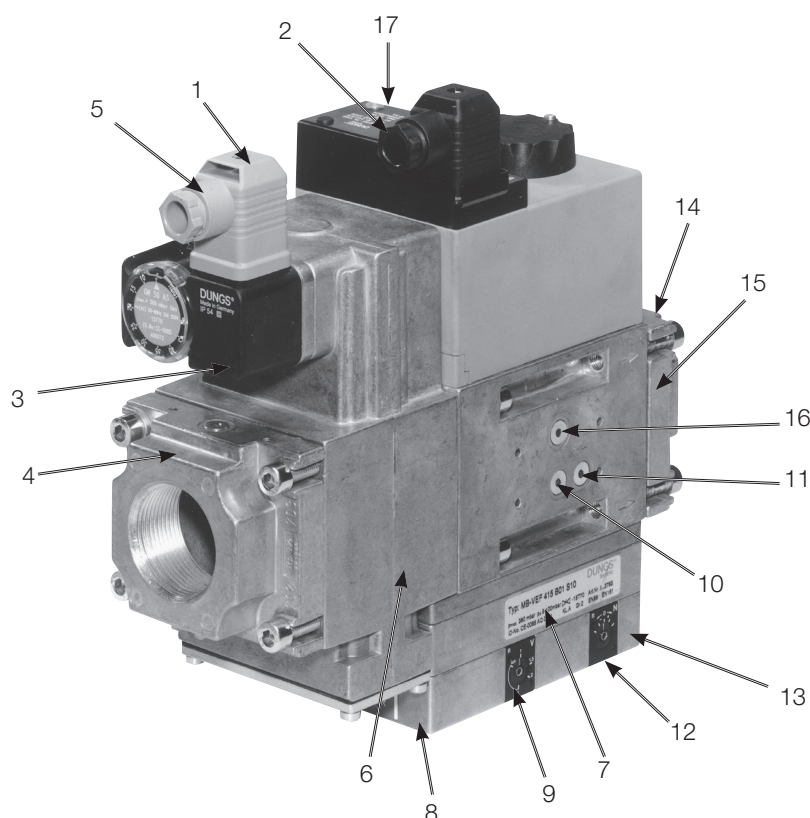
Check the gas tightness.

11. Fit the protective cover, screw (Y).



5.3 MB-VEF BO1, 415 - 425

! All components must be installed without being bent, twisted or subjected to mechanical or thermal forces which can affect the components.



It is possible to connect a leakage control VPS 504 and a gas pressure switch maxi.

- | | |
|--|--|
| 1. Electrical connection gas pressure switch mini | 11. Connection for measurement of burner pressure after V2 |
| 2. Electrical connection gas valve | 12. Adjustment screw for zero point adjustment N (min. load) |
| 3. Pressure switch mini | 13. Test point connection 1/8" PF |
| 4. Flange connection inlet | 14. Test point connection 1/8" PBr(after V2 burner) |
| 5. Test point connection 1/8" before V1 | 15. Flange connection, outlet |
| 6. Filter (on Multi-Bloc 425 external filter) | 16. Test point connection 1/8" Pa before V2 (after governor) |
| 7. Data plate | 17. Indication of V1 and V2 in operation (not standard) |
| 8. Connection 1/8" PL | |
| 9. Adjustment screw V for ratio PBr: PL (max. load) | |
| 10. Test point connection 1/8" before V1 (before governor) | |

- Max inlet pressure 360 mbar
- Valves V1+V2 class A group 2 in accordance with EN 161
- Governor class A group 2 in accordance with EN88
- Ratio $V P_{Br}:P_L$ 0,75:1-3:1
- Filter according to DIN 3386
- Ambient temperature -15°C- +70°C
- Protection standard type IP54 (according to IEC 529, DIN 40050)
- Gas family 1 +2 +3
- Outlet pressure 0,5 - 100 mbar
- Zero point adjustment $N \pm 2$ mbar
- Pressure switch DIN3398 TI
- Fan pressure P_L 0,4-100 mbar
- Fire room pressure P_F -2 -+5mbar
- Burner pressure P_{Br} 0,5 - 100 mbar

Mounting instruction - impulse lines P_L , P_F and P_{Br}

- Impulse lines should preferably be made of steel. Inside diameter $>\phi 4$ mm (steel tube $\phi 6/4$).
- For P_L other material can be used.
- Impulse lines P_L and P_{Br} are ready from factory.
- Impulse lines shall be mounted in such a way that no condensate can flow back into the multibloc. This is especially important when P_F is concerned.
- Impulse lines shall be mounted in such a way that they are protected against rupture and damage.
- Impulse lines shall be as short as possible.

Adjustment range



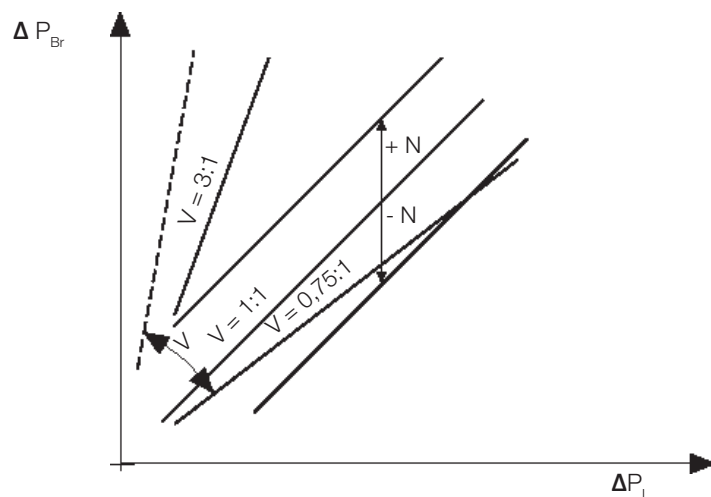
Effective burner pressure

$$\Delta P_{Br} = P_{Br} - P_F$$

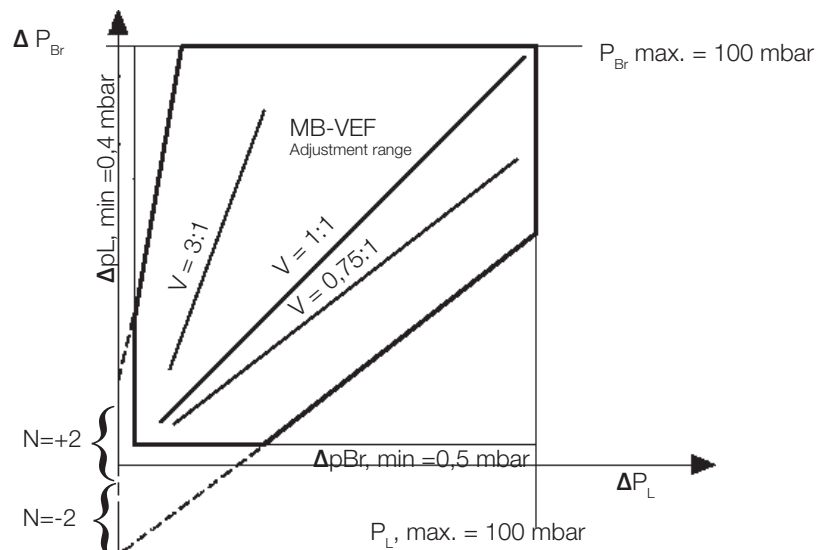


Effective fan pressure

$$\Delta P_L = P_L - P_F$$

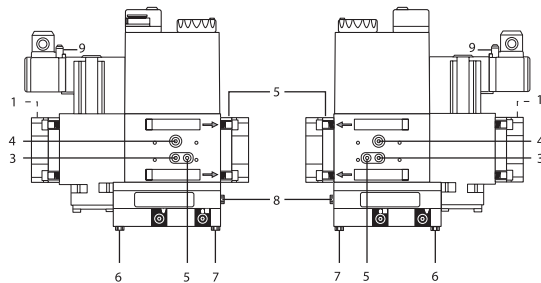


Adjustment range

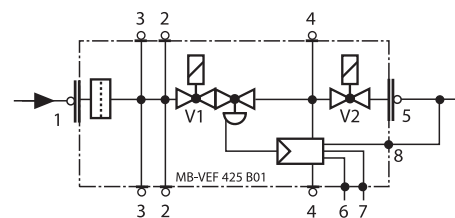
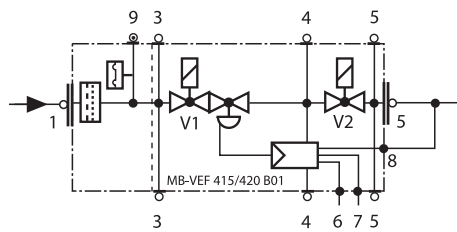
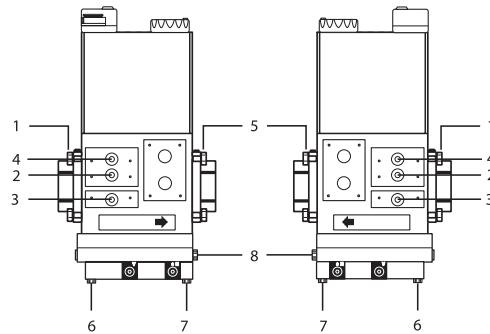


5.3.1 Pressure taps

MB-VEF 415
MB-VEF 420



MB-VEF 425



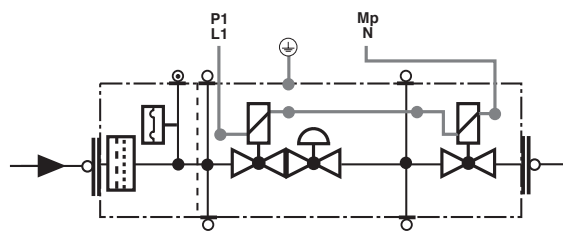
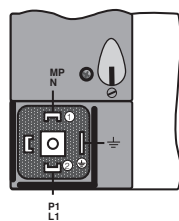
1, 2, 3, 4, 5 G1/8 screwed seal plug

9 Test nipple

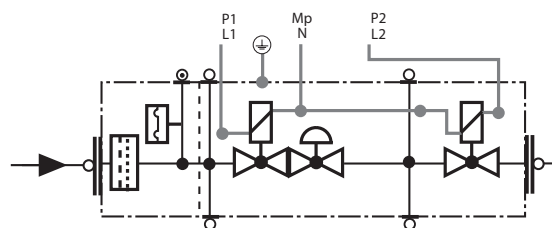
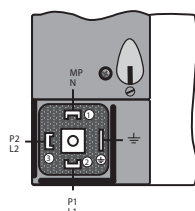
6, 7, 8 Pulse lines P_L , P_F and P_{Br} .

5.3.2 Electrical connection

S 10/S 30



S 12/S 32



5.4 Recommended excess air when using default setting

Grade of gas	Excess air flue gases		Max. % CO ₂
	% O ₂	% CO ₂ Lambda 1.2	
Natural gas	3-5	≈10	11.9
Propane	3-5	≈11.5	13.9
Butane	3-5	≈11,5	14,1
Liquefied petroleum gas (LPG)	3-5	≈11	13,8

5.5 Determining the gas quantity for the system

The heat values indicated are normal values; the heat value varies according to the origin of the gas. For more exact information on values, contact the gas distributor.

Lower heat value Hu at normal state 15°C and 1013.25 mbar EN676

Grade of gas		kWh/Nm ³	MJ/Nm ³	kcal/Nm ³
Natural gas	G20	9.5	34.02	8126
Natural gas	G25	8.2	29.25	6986
Propane	G31	24.6	88.00	21019
Butane	G30	32.5	116.09	27728

5.5.1 Example of how to calculate the gas quantity (natural gas G20):

$V_0 =$	Desired quantity of gas	[Nm ³ /h]
$Q =$	Boiler output	[kW]
$H_u =$	Gas heat value	[kWh/Nm ³] or [MJ/Nm ³] or [kcal/Nm ³]
$\eta =$	Boiler efficiency	[%]

Calculation example:

$Q =$ 500 kW

$H_u =$ Example A: 34020 MJ/Nm³

Example B: 9.5 kWh/Nm³

Example C: 8126 kcal/Nm³

$\eta =$ 90%

$$\begin{aligned}
 \text{Example A} \quad V_{0A} &= \frac{Q \cdot 3600}{H_u \cdot \eta} = \frac{500 \cdot 3600}{34020 \cdot 0.90} \approx 58.8 \text{ Nm}^3/\text{h} \\
 \text{Example B} \quad V_{0B} &= \frac{Q}{H_u \cdot \eta} \approx \frac{500}{9.5 \cdot 0.90} \approx 58.5 \text{ Nm}^3/\text{h} \\
 \text{Example C} \quad V_{0C} &= \frac{Q}{H_u \cdot 0.00116 \cdot \eta} = \frac{500}{8126 \cdot 0.00116 \cdot 0.90} \approx 58.9 \text{ Nm}^3/\text{h}
 \end{aligned}$$

If the barometer reading (altitude), pressure and temperature of the gas deviate significantly from normal values, this must be taken into account as follows:

$$\begin{aligned}
 T &= \text{Temperature of gas at the gas meter} && [^{\circ}\text{C}] \\
 B &= \text{Barometer reading} && [\text{mbar}] \\
 P &= \text{Pressure of gas at the gas meter} && [\text{mbar}] \\
 f &= \text{Factor calculated for multiplication with flow in Nm}^3/\text{h to} && \\
 &\quad \text{arrive at actual flow in Nm}^3/\text{h}. && \\
 V &= \text{Actual flow} && [\text{m}^3/\text{h}] \\
 f &= \frac{273}{273+T} \cdot \frac{B+P}{1013.25}
 \end{aligned}$$

Calculation example:

$$T = 15^{\circ}\text{C}$$

$$B = 945 \text{ mbar}$$

$$P = 15 \text{ mbar}$$

$$f = \frac{273}{273+15} \cdot \frac{945+15}{1013.25} \approx 0.90 \text{ Nm}^3/\text{h}$$

This means that the quantity of gas read from the gas meter should actually be read off as 1.11 . the calculated flow in a normal state.

$$\begin{aligned} V &= V_0 \cdot f \\ V_A &= V_{0A} \cdot f = 58.8 \cdot 0.90 \approx 53 \text{ m}^3/\text{h} \\ V_B &= V_{0B} \cdot f = 58.5 \cdot 0.90 \approx 53 \text{ m}^3/\text{h} \\ V_C &= V_{0C} \cdot f = 58.9 \cdot 0.90 \approx 53 \text{ m}^3/\text{h} \end{aligned}$$

5.6 Calculating the quantity of gas supplied

The quantity of gas supplied can be calculated if the system is equipped with a gas flow meter of some type. The procedure here is usually to measure how long it takes for the burner to consume a certain quantity of gas.

To measure:

t = Time for a certain quantity of gas consumed by the burner. [h]

M = Quantity of gas consumed. [m³]

V = Actual gas flow [m³/h]

$$V = \frac{M}{t} \text{ [m}^3/\text{h]}$$

Calculation example:

$$t = 1 \text{ min } 10 \text{ s}$$

$$M = 450 \text{ dm}^3 \text{ (litre)}$$

$$M = \frac{450}{1000} = 0.45 \text{ m}^3$$

$$t = \frac{1}{60} + \frac{10}{3600} = 0.0194 \text{ h}$$

$$V = \frac{M}{t} = \frac{0.45}{0.0194} \approx 23.2 \text{ m}^3/\text{h}$$

6. Service

Whoever carries out service and maintenance on the burner must be authorised to do so. If components need to be replaced, the replacements must be of the same make and type and be approved by the authorities. If the burner is to be used for a different grade of gas, a new adjustment must be carried out. If town gas is to be used, it is also necessary to convert the combustion assembly; in some cases the multi-block or valves and gas train may also need to be changed to a larger type.

6.1 Servicing the combustion assembly

Removal and installation

1. Switch off the main power supply and disconnect the Euro plugs from the burner.

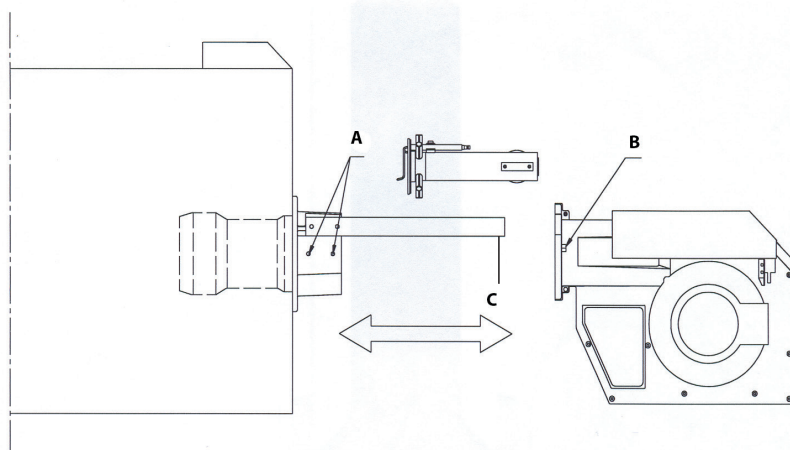


If the burner is directly connected, ensure that all components on the burner are without power.

2. Remove the cover and disconnect the ignition cable and ionisation cable from the gas nozzle.
3. Loosen the nuts (B) and pull the burner body out of the guides.
4. Loosen the screw (A); this releases the combustion assembly and allows it to be lifted out.
5. Check and clean the brake plate and gas inlet. If necessary, replace the worn parts.
6. Check the ignition electrode (see chapter Gas nozzle). Replace if necessary.
7. Check the ionisation electrode (see chapter Gas nozzle). Replace if necessary.
8. Fit the combustion assembly in reverse order.
9. Press the burner together and lock using the nuts (B).
10. Fit the Euro plugs and turn on the main power supply.
11. Check/adjust the combustion.



Check the gas tightness.



172 615 17 2018-01-15

6.2 Servicing air dampers

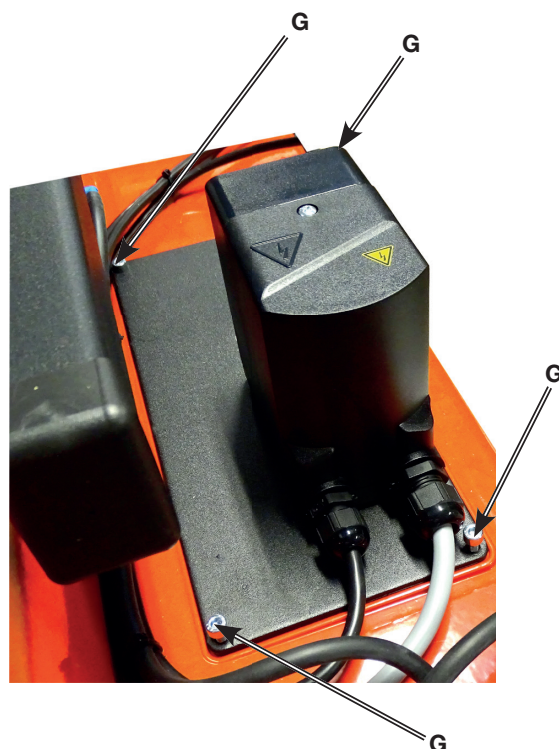
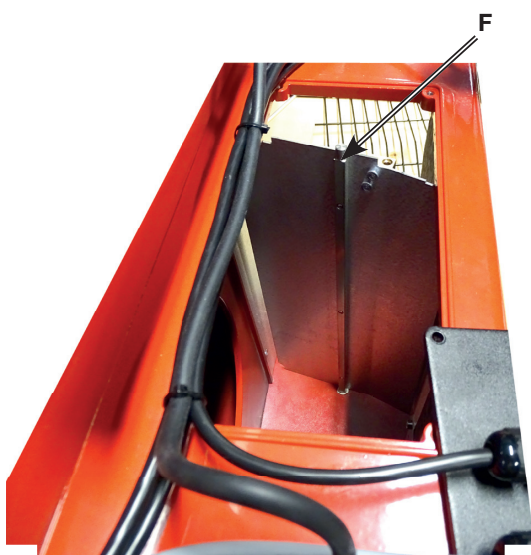
Removal and installation

1. Switch off the main power supply and disconnect the Euro plugs from the burner.



If the burner is directly connected, ensure that all components on the burner are without power.

2. Remove the cover and disconnect the ignition cable and ionisation cable from the gas nozzle.
3. Loosen the nuts (B) and pull the burner body out of the guides.
4. Remove the intake grille at the air intake.
5. Remove the screws (G) securing the damper motor mounting plate.
6. Lift up the damper motor.
7. Clean the air damper (F) and the intake. Lubricate any damper shaft.
8. Re-install the damper motor and mounting plate on the air intake. Ensure that the damper shaft and control arm are connected correctly.
9. Install the intake grille for the air intake.
10. Press the burner together and lock using the nuts (B).
11. Check/adjust the combustion.



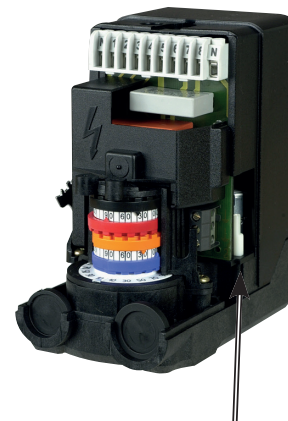
6.3 Replacement of damper motor, air

Removal and installation

1. Break the main current and disconnect the Euro plugs from the burner.

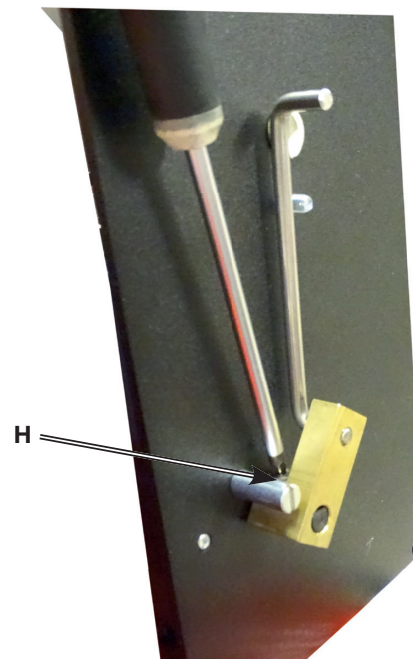
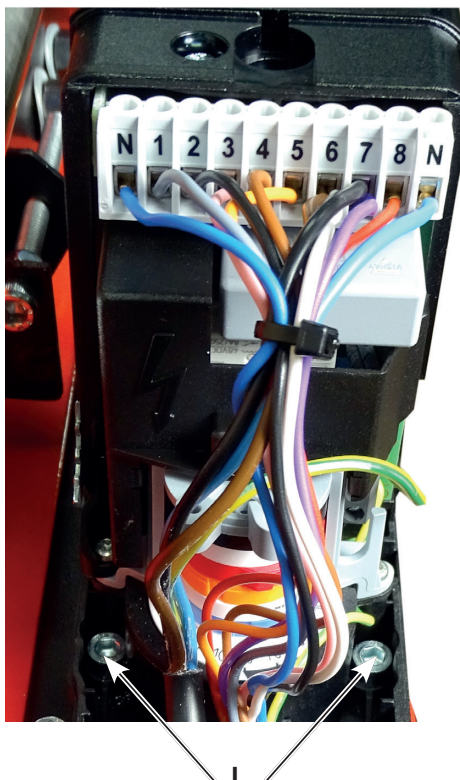
! If the burner is directly connected, ensure that all components on the burner are without power.

2. Note the connection position of the cables on the damper motor.
3. Disconnect the damper motor cable from the damper motor.
4. Loosen the screws (G) to the damper motor mounting plate.
5. Lift up the damper motor.
6. Remove (H) the control arm from the motor shaft.
7. Remove the screws (I) securing the damper motor to the mounting plate.
8. Remove the damper motor from the mounting plate (I).
9. Install the new damper motor on the mounting plate.
10. Fit the control arm on the damper motor shaft. It is important that the screw is perpendicular to the plane of the shaft.
11. Re-install the damper motor and mounting plate on the air intake. Ensure that the damper shaft and control arm are connected correctly.
12. Connect the damper motor cable.
13. Fit the Euro plugs and turn on the mains power.
14. Check/adjust the combustion.



- Releasing button

By pressing the button and snapping it down, the motor will be released and the damper can easily be turned. This function facilitates an exchange of damper motor.



6.4 Vibration

Maximum vibration level are 5,0 mm/s

- Check all bolts and nuts for correct torque
- Check fan wheel for damage and contamination. Change when dirty/unbalanced
- Check motor bearings. If worn change motor/bearings

Use lid screw for
sensor mounting




6.5 Flame monitoring and ionisation current check

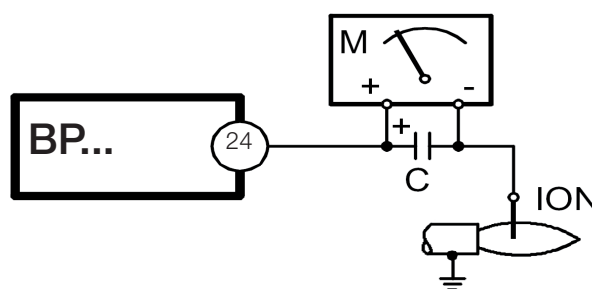
The standard version of the burner is monitored according to the ionisation principle. The ionisation current should be checked on initial start-up and at each service visit.

The cause of low ionisation current can be leakage current, poor connection to earth, fouling, or the angle of the ionisation electrode may need to be adjusted. Occasionally, an incorrect gas/air mix may result in poor ionisation current. Ionisation current is measured using a micro ammeter (μA) connected in series with the ionisation electrode and gas burner control. Connect the μ ammeter according to the diagram. The minimum required ionisation current is shown in the table. In practice, this current must be significantly higher, preferably more than $10 \mu\text{A}$. Connection of the μA instrument is made easier by the fact that all gas burners are equipped with a divisible ionisation cable.

Technical data

For continuous operation!

Idle voltage at ION-terminals	AC 330 V
<div> Protect the ionisation electrode from electric shock!</div>	
Short-circuit current	Max 0,5mA
Min. current for flame detection	Min 3 μA
Required current to ensure detection	Min 3 μA
Possible detection current	Max 20 μA



6.6 UV detector

This should not be exposed to temperatures higher than 60°C . The signal running through the UV probe when it is illuminated cannot be measured. To check the flame, perform the following:

The LEDs can show the flame strength in Control mode by pressing the reset button for 3 seconds when the Flame LED flashes during start-up. In Control mode, the Status LED shines yellow, the Fan LED flashes, and LEDs 2-6 show the flame signal strength. Each LED corresponds to 20% of the total flame signal. 5 lit LEDs correspond to 100% and 2 LEDs correspond to 40%.

7. Handing over of the installation

- Make repeated start attempts to ensure that the adjustments function.
- Close the ball valve during operation to check that the gas switch switches off at the set value.
- Remove the hose for the air pressure switch to check that the burner locks out.
- Check that all protective covers and measurement nipples are mounted and fastened.
- Fill out necessary test reports.
- Instruct the persons in charge of the operation on the service and maintenance of the installation and what to do should any troubles occur.
- Inspection and service must be carried out by authorized personnel.



Review and service should be performed by authorised personnel only

8. Fault location, functional troubles

Trouble free operation is dependent on three factors: electricity, gas and air supply. Should there be any changes in the ratio between these three factors there is a risk of break downs. It has been proved that most break downs are caused by simple faults. Before calling the service engineer, the following should therefore be checked:

- Is the gas cock open?
- Are all fuses in order and the current switched on?
- Are the thermostats correctly set?
- Are pressostats, overheating protection etc. in operating position and not locked-out?
- Is the gas pressure sufficient?
- Is the gas burner control in start position?
- Has the gas control or the motor protector locked out? - Reset.
- Is the circulation pump in operation?
- Is there a supply of fresh air to the installation?
- If integral components are of a different make from what is stated in this manual, see the enclosed loose-leaf.

9. Electric equipment

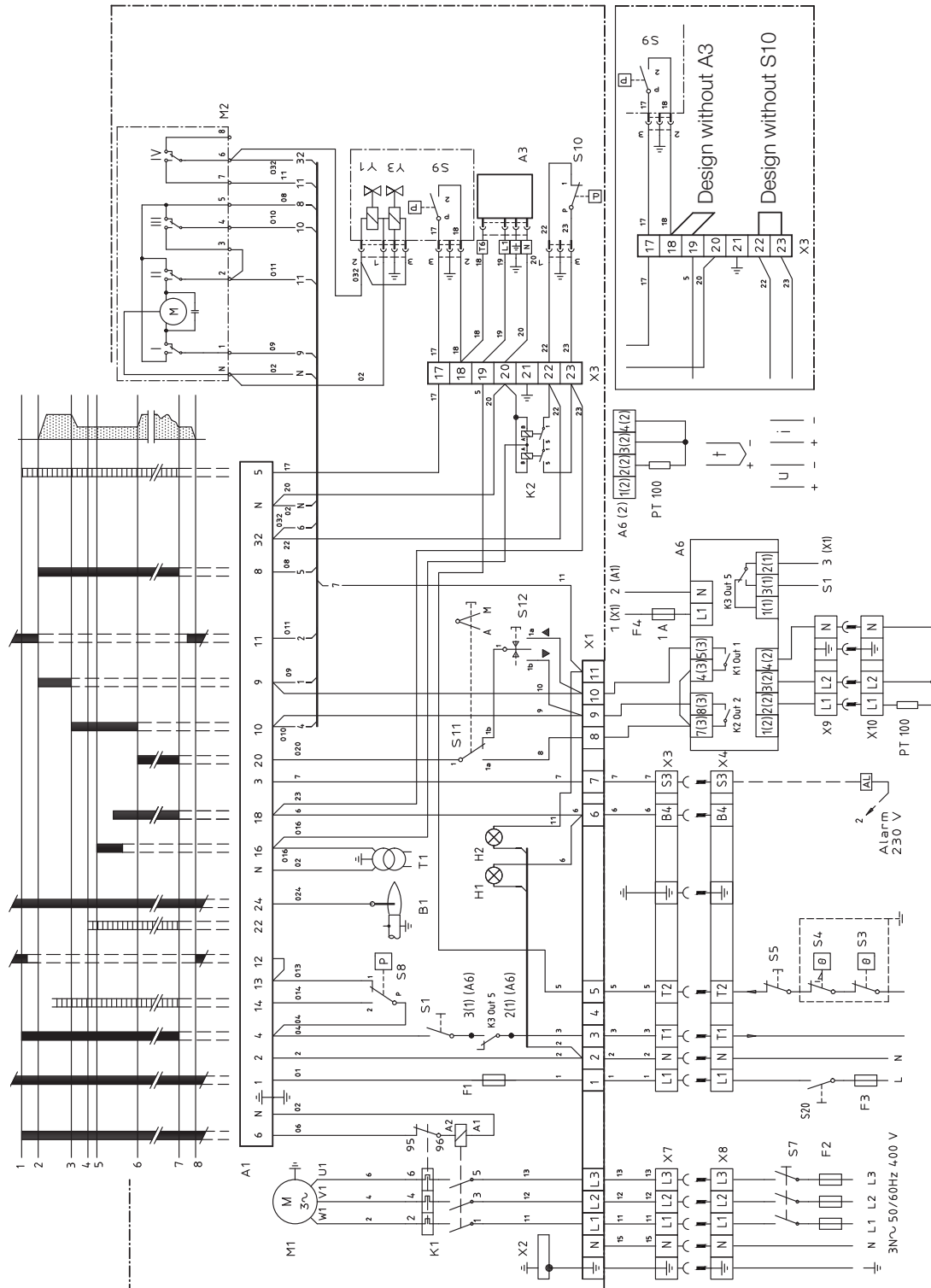
9.1 Safety system

Safety systems must be installed in accordance with regulations that are applicable for the appliance. This may differ according to the process burner are installed in to. Se local regulations for information.

Safety system cables must be run in separate cables outgoing signal must not come in same cable as incoming signal. Signals must be in different harnesses for safety reasons.

Safety system as door switches, water level, pressure, temperature and other safety limiters must be installed in safety loop according to process.

9.2 Wiring diagram BP



9.3 List of components

A1	Burner control	M1	Burner motor	X2	Earth terminal
A3	Valve, leak tester, Dungs VPS504	M2	Damper motor, air	X3	Plug-in contact, burner
A6	Power control R316	S1	Operating switch	X4	Plug-in contact, boiler
A6(2)	PT 100-sensor, Thermocouple, current/voltage	S3	Rules/Operating thermostat	X7	Plug-in contact, 3 phase, burner
		S4	Temperature/pressure limiter	X8	Plug-in contact, 3 phase, boiler
		S5	Safety switch		
B1	Ionization electrode	S7	Main switch	X9	Plug-in contact, power controller R316, burner
F1	Fuse	S8	Air pressure switch		
F2	Fuse	S10	Pressure switch max./manual reset	X10	Plug-in contact, power controller R316
F3	Fuse			S9	Pressure switch min.
F4	Fuse	S11	Change-over switch, Aut.-man.	Y1	Gas solenoid valve
H1	Indicator lamp, 1-way / Operating lamp	S12	Change-over switch, Increase-Reduce	Y3	Gas solenoid valve
H2	Indicator lamp, 2-way	S20	Main switch operating power		
K1	Motor contactor with thermal overload protector	T1	Ignition transformer		
K2	Auxiliary relay	X1	Connection block		

Mains connection and fuse in accordance with local regulations.

Max loading K1

Connection A1,A2 / 95, 96 / 97, 98 Max 0,2A/15W

10. Control





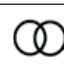


10.1 Technical data

	BP230UVFR-S2	BP230UVFR-S3
Pre-purge time (t1)	30.7 s	37.2 s
Pre-ignition time (t3)	6 s	2.5 s
Safety time (TSA)	3 s	5 s
Post-purge time (t6)	16.8 s	14.9 s
Reaction time for low interrupt	1 s	1 s
Ambient temperature BP	-40 to +60 °C	-40 to +60 °C
Ambient temperature UV5	-20 to +60 °C	-20 to +60 °C
Max. current, terminals 6-7	2 A	2 A
Max. current, other terminals	1 A	1 A
Ionisation current	3-10 µA	–

10.2 LED indicator lamps

BurnerPRO's burner control has seven LEDs which indicate the operating status of the control unit and the cause of the lockouts.

Each LED has an icon describing its function.

	FAN	Lights up when voltage is supplied to the fan motor (terminal 6)
	OPEN DAMPER 6	Flashes when the damper motor runs to maximum position. When the switch for the maximum damper motor position closes, this LED will light continuously.
	CLOSE DAMPER 5	Flashes when the damper motor runs to minimum position. When the switch for the minimum damper motor position closes, this LED will light continuously.
	AUTO 4	Lights up when the Burner control is in normal operating mode.
	IGNITION 3	Indicates ignition
	FLAME 2	Lights up when a flame is detected by the flame detector.
	ALARM/STATUS	In lockout mode, the Alarm lamp lights up and the other LEDs light up to indicate lockout. Refer to "Fault codes".

The LEDs can show the flame strength in Control mode by pressing the reset button for 3 seconds when the Flame LED flashes during start-up. In Control mode, the Status LED shines yellow, the Fan LED flashes, and LEDs 2-6 show the flame signal strength. Each LED corresponds to 20% of the total flame signal. 5 lit LEDs correspond to 100% and 2 LEDs correspond to 40%.








10.3 Explanation of the different sequence modes

1. **Operation**
This is the control unit voltage supply.
2. **System test**
In this status mode, the control unit undergoes an internal test to verify correct functionality of the hardware and software.
3. **Preconditions for burner start-up**
The control unit verifies that the air pressure switch is in the depressurised position and a test of the fuel cut-off valve is carried out.
4. **Heating requirement**
The operating thermostat closes and voltage is supplied to connection 5 so that the control unit can start the burner.
5. **Pre-purge begins**
The control unit starts the fan. Connections 6 and 7.
6. **Damper motor opens**
Control unit connection 9 sends a command to the damper motor to run at Max. mode. The control unit detects that the damper motor's end position switch indicates successful transition to the Max. load mode by supplying voltage to the connection 8 input. The control unit also performs a test to ensure that the air sensor detects airflow by monitoring connection 14.
7. **Pre-purge**
The combustion chamber is ventilated.
8. **Damper motor closes**
Following pre-purge, the control unit closes connection 10. The control unit detects that the damper motor is in the Low Load mode by supplying voltage to connection 8 on the control unit.
9. **Ignition on**
The control unit supplies voltage to the ignition transformer by activating connection 16.
10. **Fuel on** The control unit activates the fuel valve by supplying voltage to connections 17 and 18 as well as to direct ignition systems.
11. **Flame indication**
Ignition transformer turns off. The flame signal is tested during this stage. If no flame is detected, the burner enters Lockout mode.
12. **Operating mode**
Once a flame is stable, the control unit transitions to Operating mode. There must be a flame signal. Voltage is supplied to connection 20.
13. **Shutdown**
Shutdown occurs when the heating requirement is met and power is cut off to the operating thermostat connection 5 . The control unit closes the fuel valves by cutting off power to outputs 18 and 20. The fan post-purges the combustion chamber.
14. **Lockout**
The control unit enters lockout mode when an internal or external fault is detected. The reset button and the remote-reset connection can be used to disable Lock mode. However, the control unit will revert to lockout mode if the fault is not rectified.

Burner Lockout

When lockout occurs, the LEDs indicate the cause. The control unit status is saved in the memory, even in the event of a power outage. By pressing the manual reset button on the control unit or remote reset.

10.4 BurnerPro LED fault/lock code table

NO.	FAULT	LED 1	LED 2	LED 3	LED 4	LED 5	LED 6	LED 7	POSSIBLE SOLUTION
	OPERATION LED ● = ON	Fan	Open damper	Closed damper	Auto	Ignition	Flame	Status	
	ICON								
1	DIAGNOSTIC ERROR, MAIN MCU INLET	●						RED	Initial diagnostic error. Ensure correct status of inputs and outputs when the unit is turned on.
2	LOCAL RESET		●					RED	User-initiated manual reset/lockout or defective reset switch.
3	AIR SENSOR	●	●					RED	Air sensor signal [connection 14] could not be detected by the end of the safety time, or loss of the air sensor signal during burner operation
4	DIAGNOSTIC ERROR			●				RED	"The system detected voltage at terminal 16, 17, 18, or 19 at the incorrect time, or no voltage detected when necessary. Check cabling and makes sure the system is running on a single line phase (50/60Hz)"
5	IONISATION FLAME LOSS	●		●				RED	Flame loss. Inspect the system, check the gas pressure, flame detector, cabling, etc.
6	IONISATION CIRCUIT FAULT		●	●				RED	Replace the control unit. Contact reseller/distributor.
7	INTERNAL COMMUNICATION ERROR	●	●	●				RED	Reset the system to continue normal operation. Contact reseller/distributor if the fault persists.
8	REMOTE RESET				●			RED	The user has pressed Remote Reset or the remote controller has short-circuited.
9	IONISATION FAULT	●			●			RED	Replace the control unit. Contact reseller/distributor.
10	MAIN PROGRAM SEQUENCE ERROR		●		●			RED	Replace the control unit. Contact reseller/distributor.
11	RAM TEST	●	●		●			RED	Replace the control unit. Contact reseller/distributor.
12	PROGRAM SEQUENCE ERROR			●	●			RED	Replace the control unit. Contact reseller/distributor.
13	READING ERROR INPUT	●		●	●			RED	Check cabling and makes sure the system is running on a single phase (50/60Hz)
14	TIMER2 ERROR		●	●	●			RED	Replace the control unit. Contact reseller/distributor.
15	CPU TEST FAILED	●	●	●	●			RED	Replace the control unit. Contact reseller/distributor.
16	FLAME LOSS	●				●		RED	Visually inspect the flame detector and confirm that the pilot light was lit during start-up. Check the fuel supply system.
17	CABLE FAULT		●			●		RED	The system detected voltage at terminal 16, 17, 18, or 19 at the incorrect time, or no voltage detected when necessary. Check cabling and makes sure the system is running on a single phase (50/60Hz)
18	SAFETY RELAY FAULT	●	●			●		RED	Replace the control unit. Contact reseller/distributor
19	FUEL VALVE OPEN			●		●		RED	Check fuel valve cabling. The valves may not be fully closed.

NO.	FAULT	LED 1	LED 2	LED 3	LED 4	LED 5	LED 6	LED 7	POSSIBLE SOLUTION
20	FLAME LOSS	●		●		●		RED	Visually inspect the flame detector and confirm that the main flame was lit during start-up. Check the fuel supply system.
21	WELDED SAFETY RELAY		●	●		●		RED	Replace the control unit. Contact reseller/distributor.
22	SELF TEST	●	●	●		●		RED	Replace the control unit. Contact reseller/distributor.
23	ROM ERROR				●	●		RED	Replace the control unit. Contact reseller/distributor.
24	FLAME LOSS DURING OPERATION	●			●	●		RED	Check the cabling. Check the flame detector. Check the fuel supply system.
25	RAM ERROR		●		●	●		RED	Replace the control unit. Contact reseller/distributor.
26	INTERNAL FAULT	●	●		●	●		RED	Replace the control unit. Contact reseller/distributor.
27	NOT USED								
28	NOT USED								
29	AMBIENT TEMPERATURE		●	●	●	●		RED	Ambient temperature below -40 °C or above 70 °C
30	ROM ERROR	●	●	●	●	●		RED	Replace the control unit. Contact reseller/distributor.
31	IONISATION SHORT-CIRCUIT						●	RED	Possible external short-circuit between terminals 23 and 24. Contact reseller/distributor if the fault persists.
32	TIME LIMIT EXCEEDED FOR CONTROL MODE	●					●	RED	30-minute activation time passed.
33	STANDBY FALSE FLAME		●					RED	False flame detected in Standby mode.
34	NOT USED							RED	
35	INTERNAL RESET			●			●	RED	Internal software reset of control unit. Contact reseller/distributor if the fault persists.
36	SOFTWARE RESET	●		●			●	RED	Internal software reset of control unit. Contact reseller/distributor if the fault persists.
37	WAITING TIME INPUTS		●	●			●	RED	The system was unable to perform airflow sensor test and/or valve closure test. Check the cabling. Check the air sensor and/or fuel valve switch.
38	INTERNAL RESET	●	●	●			●	RED	Internal software reset of control unit. Contact reseller/distributor if the fault persists.
39	SOFTWARE RESET				●		●	RED	Internal software reset of control unit. Contact reseller/distributor if the fault persists.
40	HARDWARE RESET	●			●		●	RED	Replace the control unit. Contact reseller/distributor if the fault persists.
41	HARDWARE RESET		●		●		●	RED	Replace the control unit. Contact reseller/distributor if the fault persists.
42	CONTROL PROGRAM FROZEN	●	●		●		●	RED	Replace the control unit. Contact the distributor/factory.
43	CONTROL PROGRAM FROZEN			●	●		●	RED	Replace the control unit. Contact reseller/distributor.
44	TIMER2 ERROR	●		●	●		●	RED	Replace the control unit. Contact reseller/distributor.
45	LOW VOLTAGE ERROR		●	●	●		●	RED	Check mains power. Contact reseller/distributor if the fault persists.
46	LOW VOLTAGE ERROR	●	●	●	●		●	RED	Check mains power. Contact reseller/distributor if the fault persists.
47	UV DETECTION FAULTY					●	●	RED	Replace the control unit. Contact reseller/distributor.

NO.	FAULT	LED 1	LED 2	LED 3	LED 4	LED 5	LED 6	LED 7	POSSIBLE SOLUTION
48	INTERNAL FAULT	●				●	●	RED	Replace the control unit. Contact reseller/distributor.
49	INTERNAL FAULT		●			●	●	RED	Replace the control unit. Contact reseller/distributor.
50	IGNITION FEEDBACK	●	●			●	●	RED	The system detected voltage at terminal 16 at the incorrect time, or no voltage. Check cabling and ensure sufficient earthing.
51	PILOT FEEDBACK			●		●	●	RED	The system detected voltage at terminal 17 at the incorrect time, or no voltage. Check cabling and ensure sufficient earthing.
52	MAINP FEEDBACK	●		●		●	●	RED	The system detected voltage at terminal 19 at the incorrect time, or no voltage. Check cabling and ensure sufficient earthing.
53	WAITING TIME FEEDBACK LIMIT EXCEEDED		●	●		●	●	RED	Loss of feedback from the damper motor for more than 10 minutes. Check the cabling. Check the damper motor.
54	MAINP FEEDBACK	●	●	●		●	●	RED	The system detected voltage at terminal 18 at the incorrect time, or no voltage. Check cabling and ensure sufficient earthing.
55	DIAGNOSTICS INTERRUPTED				●	●	●	RED	Replace the control unit. Contact reseller/distributor.
56	UV FALSE FLAME			●	●	●	●	RED	False flame detected prior to ignition. Check the cabling. Check the flame detector. Ensure sufficient earthing.
57	IONISATION FALSE FLAME			●	●	●	●	RED	False flame detected prior to ignition. Check the cabling. Check the flame detector. Ensure sufficient earthing.
58	OPEN FEEDBACK READING		●	●	●	●	●	RED	The system detected voltage at terminal 8 at the incorrect time, or no voltage. Check cabling and ensure sufficient earthing.
59	ADJACENT POLE SHORT-CIRCUIT	●			●	●	●	RED	Replace the control unit. Contact reseller/distributor.
60	LOCAL RESET	●	●	●	●	●	●	RED	The local reset button has been pressed in for more than 10 seconds, or the reset button is stuck.
61	FUEL VALVE OPEN		●		●	●	●	RED	Fuel valve open at incorrect time.
62	STRONG UV FLAME	●	●		●	●	●	RED	Flame detector too close to the flame. Increase the distance between the flame detector and the flame.
63	INTERNAL FAULT					●		RED	Replace the control unit. Contact reseller/distributor.

10.5 Leakage control Dungs VPS 504

Technical data

Test volume	≤	4,0 l
Pressure increase using motor pumps	≈	20 mbar
Backup (customer supply)		10A fast or 6.3A slow
Fuse integrated in housing, replaceable		T6, 3L 250V (IEC 127-2/111) (DIN41662)
Switching capacity		Operating outputs SO1, SO2, SO4: 4A Fault output T7: 1A Fault output SO4 1, 2, 3, T7: 1A
Release time	≈	10 - 30 s Dependent on test volume and input pressure.
Sensitivity limit		50 l/h
Max. number of test cycles		20 /h

Program sequence

Idle state: Valves 1 and 2 are closed. Pressure buildup: The internal motor pump increases the gas pressure p_g in the section by approx. 20 mbar compared with the input pressure at valve V1. During the test time, the integrated differential pressure sensor monitors the test section for leaks. When the test pressure is attained, the motor pump switches off (end of test period). The release time (10-30 s) is dependent on the test volume (max. 4.0 l).

If the test section has no leaks, the contact is released to the control box after approx. 30 s and the yellow LED lights up.

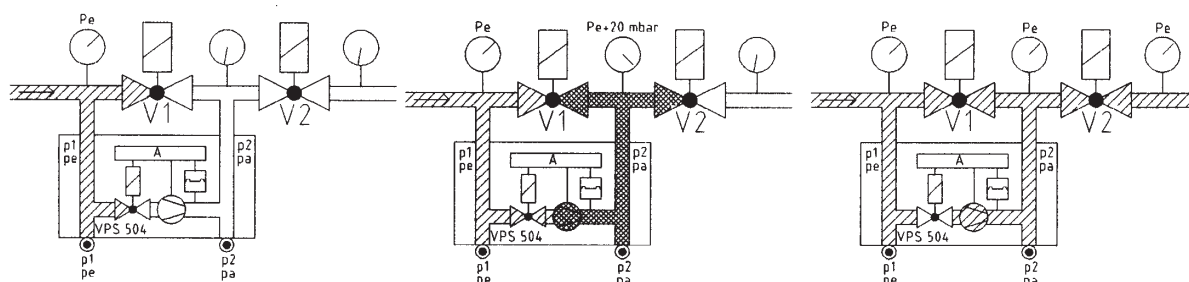
If the test section is leaky or if the pressure increase by + 20 mbar is not attained during the test period (max. 26 s), the VPS 504 generates a fault. The red LED is lit as long as the contact is released by the regulator (heat requirement).

After a short voltage drop during testing or during burner operation, an automatic restart is performed.

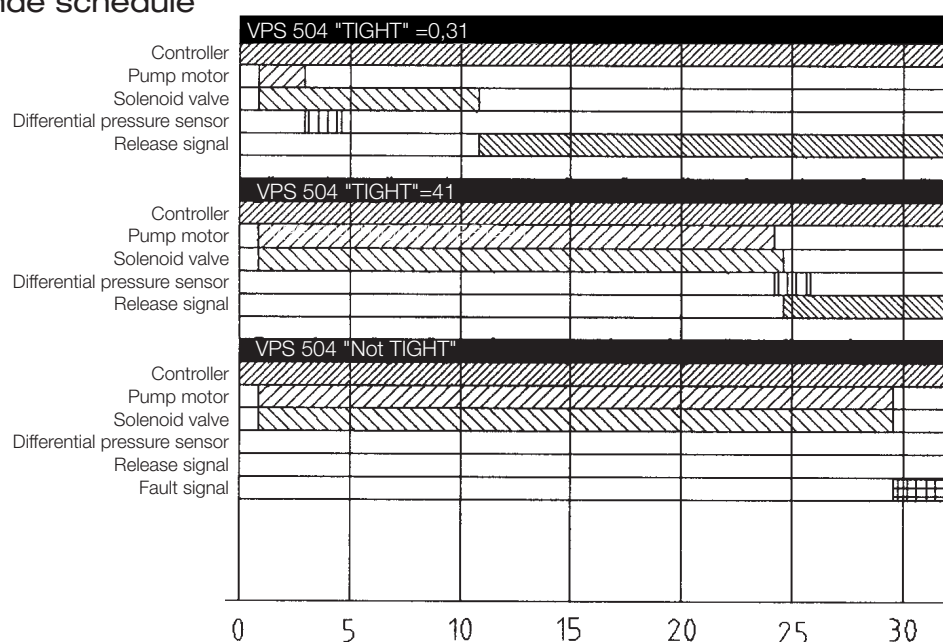
Programmer Idle state

Pressure buildup

Operation



Program sequende schedule



Electrical connection

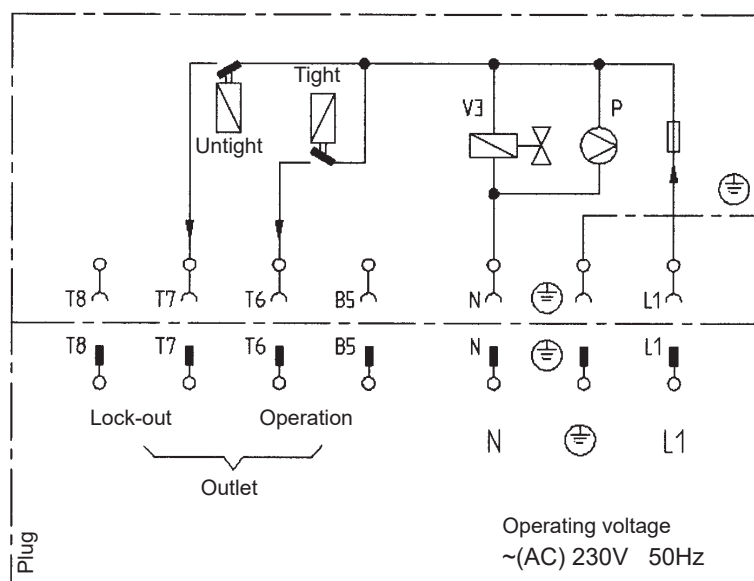
VPS 504 series 02

The VPS 504 is connected in series between the temperature regulator and the control box via a 7-pin plug connector.

Connect the boiler connector to the connector socket of the VPS 504.

For contact assignment of VPS 504 connector and heat generator connector, refer to wiring diagram.

Switching feature: No isolation between operating voltage circuit and control circuit.





JUMO dTRON 316



JUMO dTRON 308



JUMO dTRON 308



JUMO dTRON 304

JUMO dTRON 304

JUMO dTRON 308

JUMO dTRON 316

Compact Controller
with program function

11. JUMO dTRON 316

12. Preface

These brief operating instructions only cover those actions that are essential for starting up the controller.



The factory settings for the instrument as delivered are shown on a gray background.

The complete configuration options can be found in the comprehensive Operating Manual B 70.3041.0 on the CD, or can be downloaded from

<http://www.jumo.se>

Scope of delivery

- 1 controller
- seal
- mounting brackets
- brief operating instructions
- 1 CD with comprehensive operating instructions and setup program as a demo version

13. Identifying the instrument version

Meaning of the number code on the nameplate:

Basic type	
703041	JUMO dTRON 316, 48mm x 48mm format incl. 1 analog input, 2 relay outputs and 2 binary inputs or 2 logic outputs
703042	JUMO dTRON 308, 48mm x 96mm format (portrait format) incl. 1 analog and 2 binary inputs, 2 relays and 2 logic outputs
703043	JUMO dTRON 308, 96mm x 48mm format (landscape format) incl. 1 analog and 2 binary inputs, 2 relays and 2 logic outputs
703044	JUMO dTRON 304, 96mm x 96mm format incl. 1 analog and 2 binary inputs, 2 relays and 2 logic outputs

Basic type extensions			
1			Basic type 1
	8		Standard, with factory settings
	9		Programming to customer specification
			Logic outputs (2 are available as standard)
		1	0 / 12V
		2	0 / 18V

Type of option slots	
0	not used
1	Analog input 2 (universal)
2	Relay (changeover)
3	2 relays (n.o. make contacts)
4	Analog output
5	2 binary inputs
6	Solid-state relay 1 A
7	RS422/485 interface
8	Profibus-DP interface

Supply		
2	3	110 – 240V AC -15/+10%, 48 – 63Hz
2	5	20 – 53V AC/DC, 48 – 63Hz

Extra codes			
0	0	0	none
2	1	4	Math and logic module
2	1	7	Ratio controller
2	1	8	Difference controller
2	1	9	Humidity controller

703041 / 1 8 1 - 0 0 0 - 2 3 / 0 0 0 , 0 0 0

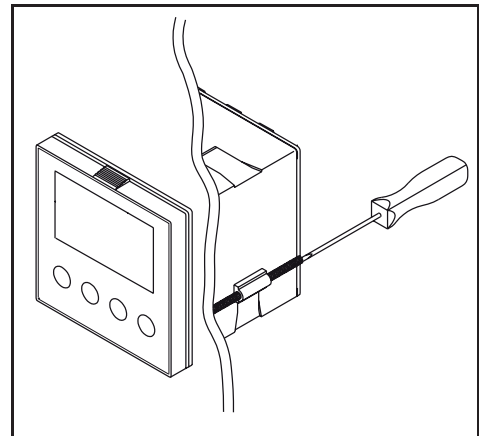
14. Mounting

14.1 Preparation

Type	dTRON	Panel cut-out
703041	316, in 48 mm x 48 mm format	45 +0,6 x 45 +0,6mm
703042/43	308, in 48 mm x 96 mm format (portrait)/ (landscape)	45 +0,8 x 92 +0,8 mm
703044	304, in 96 mm x 96 mm format	92+0,8 x 92+0,8 mm

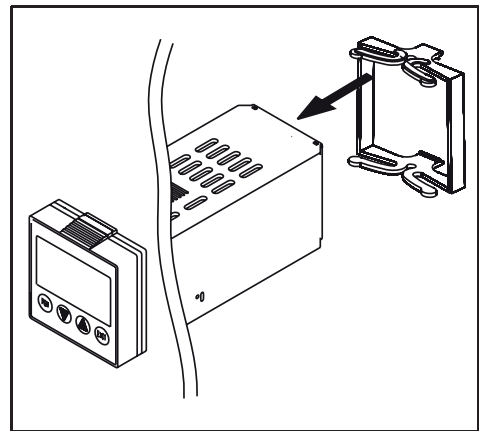
14.2 Fitting in position, Type 703042/43/44

- Fit the seal that is supplied onto the instrument body.
- Insert the controller from the front into the panel cut-out.
- From behind the panel, slide the mounting brackets into the guides on the sides of the housing. The flat faces of the mounting brackets must lie against the housing.
- Push the mounting brackets up to the back of the panel, and tighten them evenly with a screwdriver.



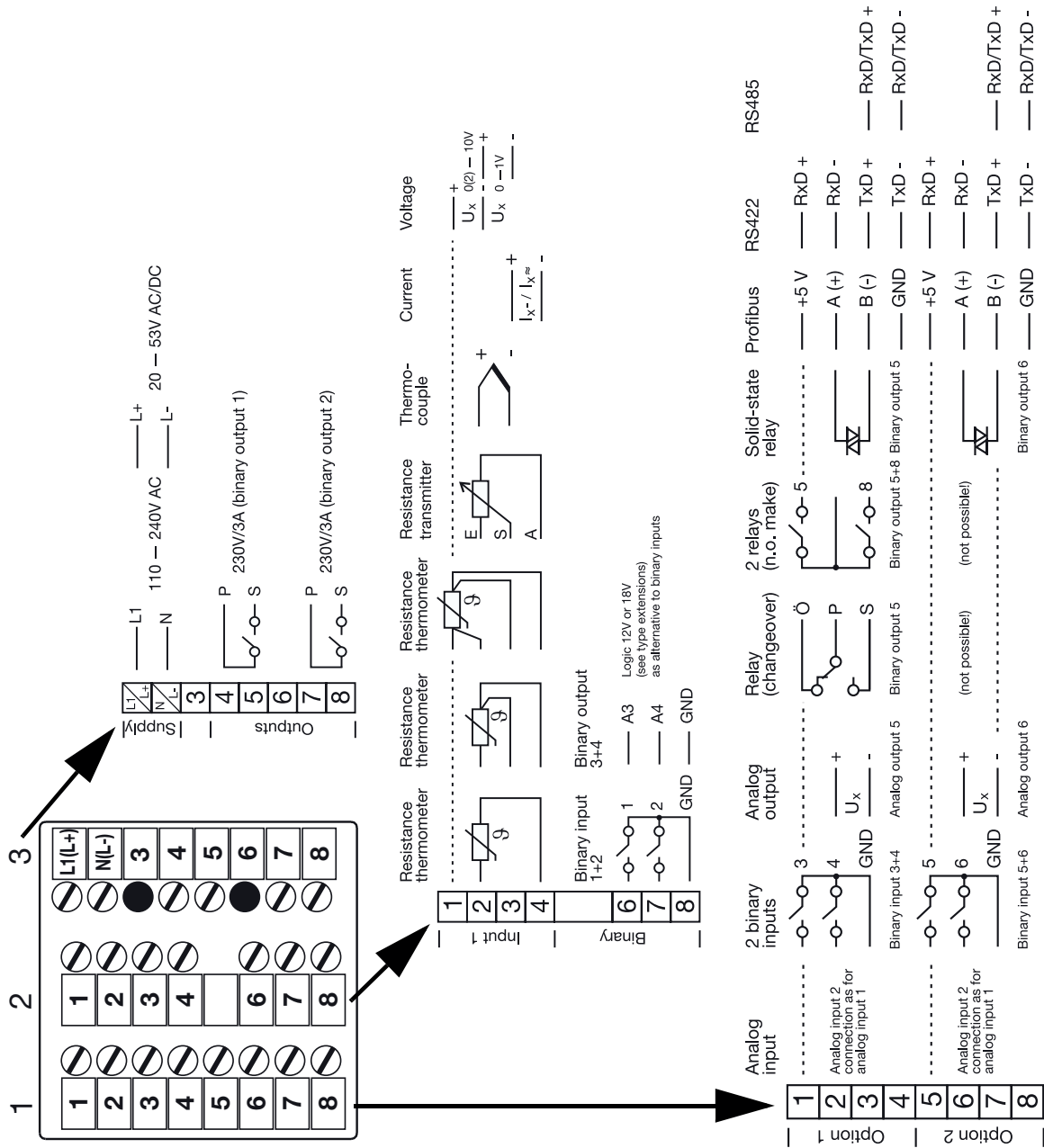
14.3 Fitting in position, Type 703041

- Fit the seal that is supplied onto the instrument body.
- Insert the controller from the front into the panel cut-out.
- From the back of the panel, push the mounting frame onto the instrument body and press it against the back of the panel, compressing the springs, until the latches snap into the notches provided and it is firmly fixed in position.

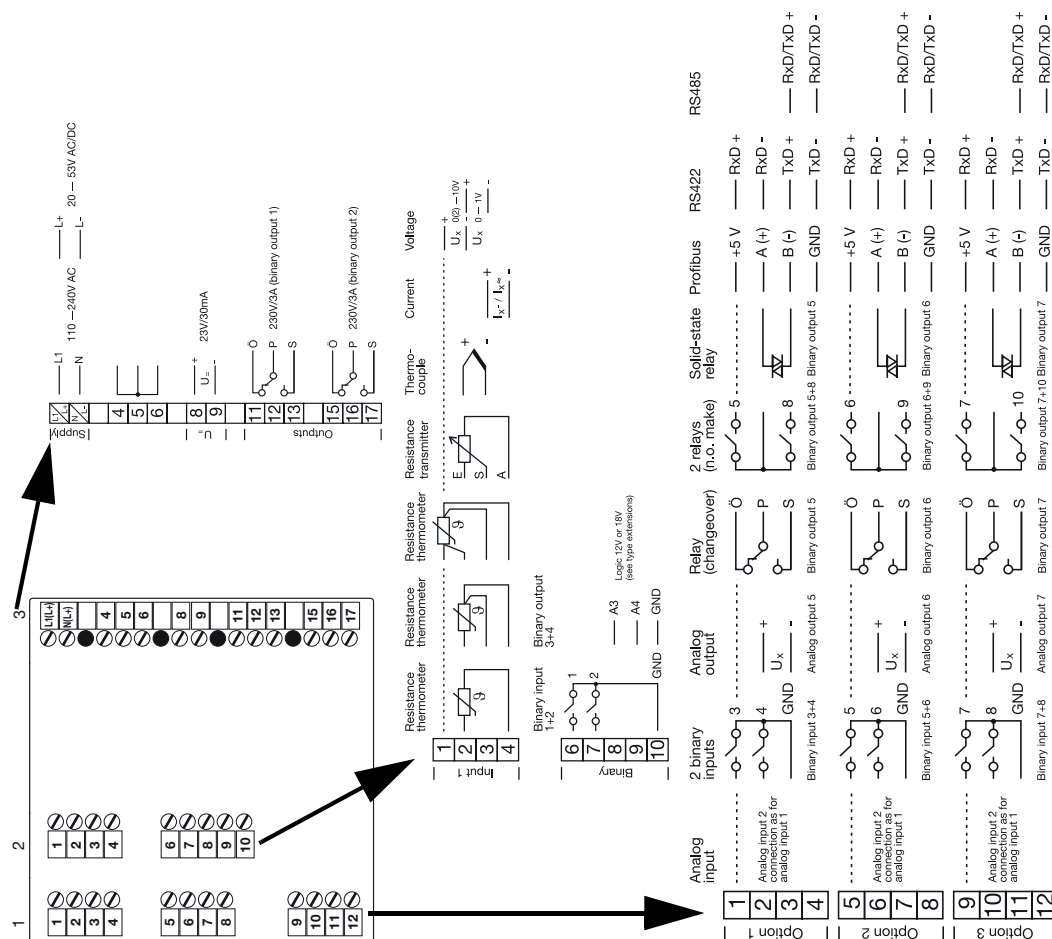


15. Electrical connection

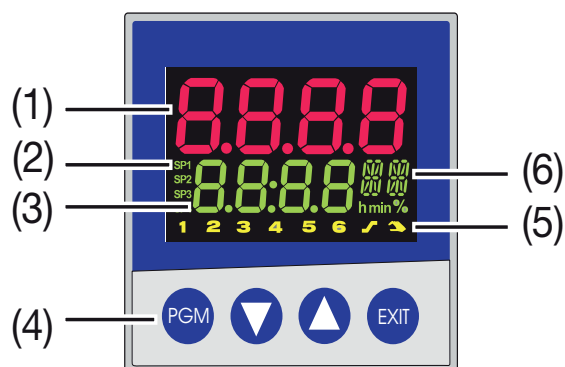
15.1 Connection diagram for Type 703041



15.2 Connection diagram for Type 703042/43/44



16. Displays and keys



(1)	7-segment display (factory setting: process value) four-digit, red, decimal place is configurable (automatic adjustment on display overflow)
(2)	Active setpoint (factory setting: SP1) SP1, SP2, SP3, SP4 (SP=setpoint); green;
(3)	7-segment display (factory setting: setpoint) four-digit, green, decimal place is configurable; also used for operator prompting (display of parameter and level symbols)
(4)	Keys
(5)	Indication yellow, for - ramp/program function is active binary outputs 1 ... 6 - manual operation is active
(6)	16-segment display + dim. units two-digit, green; for the unit °C/°F and symbols for h, min, %

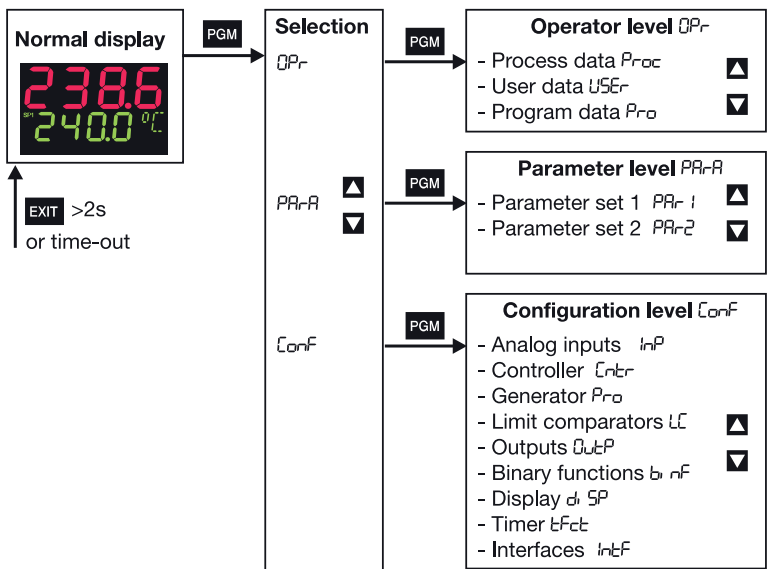
Different values can also be visualized on the display.

see the comprehensive operating manual on the CD

17. Operation

17.1 Level concept

The diagram below shows the three instrument levels.



Time-Out
If no key is pressed for 30 sec, the instrument returns to normal display.

17.2 Level inhibit

The access to the individual levels can be inhibited by entering a code number.

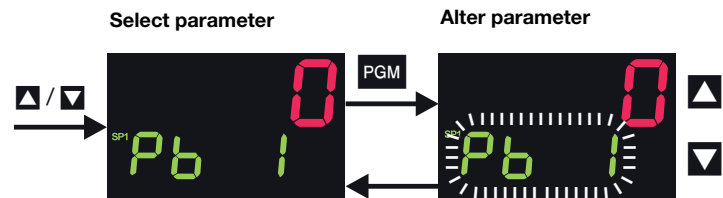
* Press **PGM** and **▼** simultaneously for >5sec to enter the code.

Code	Operator level	Parameter level	Configuration level
0	enabled	enabled	enabled
1	enabled	enabled	inhibited
2	enabled	inhibited	inhibited
3	inhibited	inhibited	inhibited

- * Alter code with **PGM** (display blinks)
- * Enter code with **▲** and **▼**
- * Return to normal display with **EXIT** or automatically after approx. 30sec

6.3 Entering values

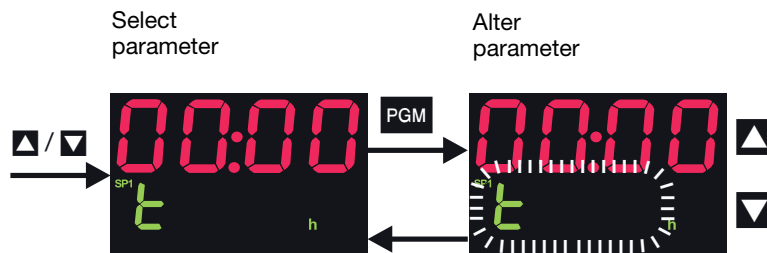
When entries are made within the levels, the parameter symbol is shown in the lower display.



- * Select parameter with **▲** or **▼**
- * Change to the entry mode with **PGM** (lower display blinks)
- * Alter value with **▲** and **▼**
The value alters dynamically with the duration of the key stroke.
- * Accept the setting with **PGM** or automatically after 2sec
- * or
- * Cancel entry with **EXIT**.
The value is not accepted.

17.3 Entering times

When entering times (e.g. time of timer), the time unit is shown in addition.



The highest time unit of the display is shown for the unit.

For example, if "h" is shown for the hour, then the time format for the value is hh:mm.

- * Select parameter with ▲ or ▼
- * Change to the entry mode with PGM (lower display blinks)
- * Alter value with ▲ and ▼
The value alters dynamically with the duration of the key stroke.
- * Accept the setting with PGM or automatically after 2 sec
- or
- * Cancel entry with EXIT.
The value is not accepted.

17.4 Operation of the fixed-setpoint controller



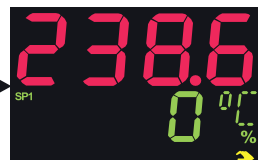
The fixed-setpoint controller will only function if

- the fixed-setpoint controller function has been configured (Fnct = 0)

Normal display



Manual mode



Selection	
OPr	▲
PARA	▼
CONF	

- * Alter the present setpoint with ▲ and ▼

The value is accepted automatically.

The controller output appears in the lower display. The hand symbol and the unit "%" light up in addition.


- * Alter the output with ▲ and ▼

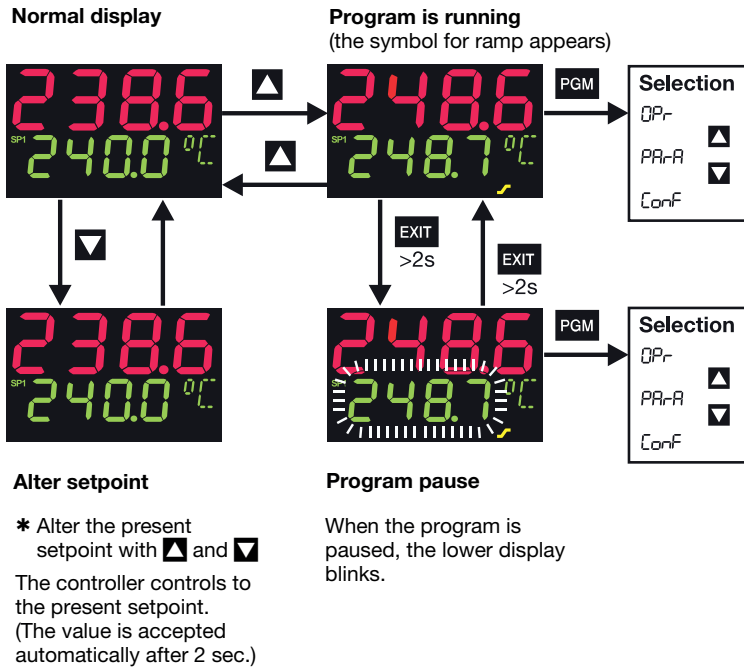
In the case of a modulating controller, the actuator is opened or closed using the keys.

The output entry on a changeover is configurable.

- * Return to the normal display with EXIT (press for more than 2 seconds)

17.5 Operation of the program controller

-  **The program controller will only function if**
- the program controller function has been configured ($F_{rct} = 1 \dots 4$)
 - the program setpoints ($SP_1 \dots SP_8$) and segment times ($t_P \dots t_P - 8$) have been entered



The program is canceled in the event of a power failure.

17.6 Operator level „OPr“

Process data *Proc*

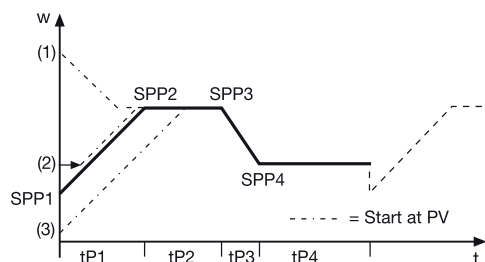
Symbol	Meaning
SP 1	Setpoint 1 (editable)
SP 2	Setpoint 2 (editable)
SP 3	Setpoint 3 (editable)
SP 4	Setpoint 4 (editable)
SPr	Ramp setpoint (only if configured)
inP 1	Measurement of analog input 1
inP 2	Measurement of analog input 2 (only if available)
F 1	Calculated result of math formula 1 (only if available)
F 2	Calculated result of math formula 2 (only if available)
Y	Output
t-run	Program run time (only with program controller/generator)
t-ES	Residual program time (only with program controller/generator)
t 1	Timer: time 1 (only if configured)
t 2	Timer: time 2 (only if configured)

User data *USER* (through the setup program only)

Any parameter (up to eight) can be displayed and edited here by using the setup program.

Program data *PRO* (only with program controller/generator)

A program with up to eight segments is defined here, via the segment setpoints SPP 1...SPP 8 and segment times tP 1...tP 8.



18. Parameter level „PArA“

Two parameter sets, PAr1 und PAr2, can be stored.

Parameter	Symbol	Value range	Factory setting
Proportional band 1 ^a	Pb 1	0 ... 9999°C/°F	0°C/°F
Proportional band 2 ^b	Pb 2	0 ... 9999°C/°F	0°C/°F
Derivative time ^c	dT	0 ... 9999s	80s
Reset time ^d	rT	0 ... 9999s	350s
Actuator time tt	tT	5 ... 3000s	60s
Cycle time 1	tY 1	0.0 ... 999.9s	20s
Cycle time 2	tY 2	0.0 ... 999.9s	20s
Contact spacing	dB	0.0 ... 999.9°C/°F	0°C/°F
Switching differential 1 ^e	HYS 1	0.0 ... 999.9°C/°F	1°C/°F
Switching differential 2	HYS 2	0.0 ... 999.9°C/°F	1°C/°F
Working point	W0	-100 ... +100 %	0 %
Output limiting (max.)	Y 1	0 ... 100 %	100 %
Output limiting (min.)	Y 2	-100 ... +100 %	-100 %

- with Pb1/2=0, the controller structure is not effective; depending on the display configuration, these values are shown with the corresponding decimal places
- for controller output 2 (with 3-state controllers)
- with dT=0, the controller has no differential action (e. g. PI controller)
- with rT=0, the controller has no integral action (e. g. PD controller)
- for controllers with Pb1/2=0

19. Configuration level „ConF“

Depending on the equipment level of the instrument, individual parameters or groups of parameters are switched out of display.

Analog selector

With some parameters, you can choose from a series of analog signals. The list below gives you an overview of the selection options.

- 0 no function
- 1 Analog input 1
- 2 Analog input 2
- 3 Process value (controller)
- 4 Setpoint (controller)
- 5 Ramp end value
- 6 Program setpoint
- 13 Controller output level
- 14 Controller output 1
- 15 Controller output 2

19.1 Analog inputs “InP”

→ **InP1** Analog input 1 →

→ **InP2** Analog input 2 →

Parameter	Symbol	Value range
Sensor type	SEN5	0... 1 ...11
Linearization	LIN	0... 1 ...18
Measurement offset	OFF5	-1999... 0 ...+9999
Display start	SCL	-1999... 0 ...+9999
Display end	SEH	-1999... 100 ...+9999

Factory settings are shown **bold**.

Sensor type	
0 no function	6 Heater current 0 – 50mA AC
1 Resistance thermometer in 3-wire circuit	7 0 – 20mA
2 Resistance thermometer in 2-wire circuit	8 4 – 20mA
3 Resistance thermometer in 4-wire circuit	9 0 – 10V
4 Thermocouple	10 2 – 10V
5 Resistance transmitter	11 0 – 1V

20.9 Configuration level „ConF“

Linearization	
0 Linear	10 Thermocouple type U
1 Pt100	11 Thermocouple type L
2 Pt500	12 Thermocouple type K
3 Pt1000	13 Thermocouple type S
4 KTY11-6	14 Thermocouple type R
5 Thermocouple type C	15 Thermocouple type B
6 Thermocouple type D	16 Thermocouple type N
7 Thermocouple type E	17 Thermocouple W3Re-W26Re
8 Thermocouple type T	18 customized linearization
9 Thermocouple type J	

→ In I2 Analog input 1 and 2 general →

Parameter	Symbol	Value range
Temperature unit	$U_{in\ T}$	0 ... 1 (0=°C, 1=°F)
Sampling cycle time	τ_{YcL}	0 ... 3 (0=50ms; 1=90ms; 2=150ms; 3=250ms)

Factory settings are shown **bold**.

20.1 Controller „Cntr“

Parameter	Symbol	Value range
Controller type	τ_{cYP}	0 no function 1 Two-state controller 2, 3 Three-state, modulating controller 4 Continuous controller
Control action	τ_{Act}	0 ... 1 (0=direct (cooling); 1=inverse (heating))

Factory settings are shown **bold**.

20.2 Generator „Pro“

Parameter	Symbol	Value range
Function	F_{nct}	0 Fixed-setpoint controller 1 Ramp function 2 Program controller 3 Program generator 4 Hot-channel controller

Factory settings are shown **bold**.

20.3 Utgångar „OutP“

Numrering av utgångar

Standard: relä 1=utgång 1; relä 2=utgång 2; binärutgång 1=utgång 3; binärutgång 2=utgång 4

Kortplats	Kort med 1 analogutgång	Kort med 1 binärutgång	Kort med 2 binärutgångar
Option 1	utgång 5	utgång 5	utgång 5+8
Option 2	utgång 6	utgång 6	utgång 6+9
Option 3	utgång 7	utgång 7	utgång 7+10

→ Analogutgång $OutA \rightarrow$ utgång 5...7 $Out5...Out7 \rightarrow$

Parameter	Symbol	Värdeområde
Funktion	F_{nct}	Analogselektor Avstängd
Signaltyp	S, E_n	0...2...3 (0=0...10V; 1=2...10V; 2=0...20mA; 3=4...20mA)
Nollpunkt	OP_{nt}	-1999... 0 ...+9999
Ändvärde	E_{nd}	-1999... 100 ...+9999

Fabriksinställning visas i **fet** stil.

→ Utgång $OutL \rightarrow$ Utgång 1...10 $Out1...Out0 \rightarrow$

Funktion	
0 ingen funktion	16 4. gränslarm
1 1. reglerutgång	17 styrkontakt 1
2 2. reglerutgång	18 styrkontakt 2
3 - används inte	19 styrkontakt 3
4 - används inte	20 styrkontakt 4
5 logikingång 1	21 logikformel 1
6 logikingång 2	22 logikformel 2
7 logikingång 3	23 timer 1 aktiv
8 logikingång 4	24 timer 2 aktiv
9 logikingång 5	25 program aktiv
10 logikingång 6	26 programslut
11 logikingång 7	27 toleransgräns
12 logikingång 8	28 manuellt läge av/på
13 1. gränslarm	29 binär markör
14 2. gränslarm	30 adressvärde (setup)
15 3. gränslarm	31 alltid „aktiv“

20.4 Display „diSP“

→

Parameter	Symbol	Värdeområde
Decimaltecken	$dEcP$	0 ...2 (0= ingen decimal; 1=en; 2=två))
Ljusstyrka	br, E	0 ...5 (0=ljus)

Fabriksinställning visas i **fet** stil.

21. Autotuning

The autotuning facility can be used to automatically adapt the controller parameters to the process.

The autotuning function determines the controller parameters for a PID controller or, if dt=0 is set, for a PI controller in a closed control loop.

The autotuning facility can be used to automatically adapt the controller parameters to the process.

The autotuning function determines the controller parameters for a PID controller or, if dt=0 is set, for a PI controller in a closed control loop.

* Start with  and  (press simultaneously for >2sec)

“tUnE” is shown blinking in the green display



* Cancel with  and  (press simultaneously).

- The more sluggishly the process responds to setpoint changes, the longer the autotuning procedure will take.
- This involves determining the controller parameters r_t , d_t , $Pb1$, $Pb2$, $Cy1$, $Cy2$, dF and accepting them automatically after the end of tuning



22. Alarms

Display	Cause	Clear faults check/rectify/replace
- 1999 (blinking!)	Underrange for the value being displayed.	Is the medium to be measured within the range (too hot - too cold?) Check probe for probe break/short-circuit. Check the probe connection and the terminals. Check the cable.
9999 (blinking!)	Overrange for the value being displayed.	
All displays are on; lower 7-segment display is blinking	Watchdog or power-on triggers initialization (reset).	Replace controller if the initialization takes longer than 5sec.
P-OF	PROFIBUS error	Can be suppressed by setting the PROFIBUS address to “0”.
OPt	Hardware configuration error	Check which option boards are installed in the slots.

Overrange/underrange covers the following events:

- probe break/short-circuit
- measurement is outside the controllable range for the probe connected
- display overflow

Displaying the software version

* Display version with  and  (press simultaneously).

23. Troubleshooting

Gas Burner

Conditions favourable to disruption-free operation of the system can only be guaranteed through the interaction between three factors – electricity, gas flow and combustion air. A change in any of these factors may cause disruptions.

It has been shown that a large proportion of disruptions can be attributed to relatively small things. Therefore, before requesting servicing, you should ascertain the following:

1. Are the system's gas taps open?
2. Are the fuses intact and is the power on?
3. Are control devices (room thermostat, boiler thermostat, etc.) correctly set?
4. Is gas pressure to the burner sufficient?
5. Are the burner controls on standby and not locked?
6. Is air supply to the burner adequate?

To facilitate troubleshooting, we have created a table of the most common faults that may arise in a gas burner system and how they should be rectified.

Cause of fault	Action
Burner does not start	
No gas	Make sure all gas taps are open
No power	Check the fuse, thermostat and electrical connections
Burner motor does not start	Motor protection has tripped. Motor faulty.
Burner control faulty	Replace
Burner motor running, no ignition spark at the end of pre-aeration	
No power in the terminals	Check the connector. Replace faulty burner controls
Ignition electrodes in contact with each other or earth	Adjust
Ignition electrode porcelain damaged	Replace the electrodes
Poor connection to cable connectors	Adjust connection
Ignition cables damaged	Replace
Transformer damaged, no power to secondary winding	Replace the transformer
Ignition cable and ionisation cable swapped around	Reconnect
No flame propagation	
Gas solenoid valve faulty	Replace
Gas solenoid valve does not open despite having power	Replace solenoid valve terminals, or entire valve
No power to solenoid valve	Check the connection
No electrical connection through air pressure gauge	Check the air pressure gauge's settings and functions
Ignition load incorrectly set	Increase/decrease gas supply Reduce airflow

Cause of fault	Action
Burner control faulty	Replace
Air pressure gauge incorrectly set or faulty	Check the settings and reset, or replace
No acknowledgement signal due to incorrect adjustment or misalignment of the control motor cams.	Check the settings and realign.
Burner trips after safety time limit despite flame propagation	
No ionisation current or UV cell incorrectly positioned	Adjust ionisation electrode and UV cell Check cables and connectors
Burner control monitor faulty	Replace burner control
Voltage lower than 185 V	Contact an electrician
Ignition electrodes disrupting ionisation current	Adjust ignition electrodes. Re-polarise the transformer
Poor earth connection	Ensure adequate earth connection
Phase and neutral swapped around	Check wiring diagram and change accordingly
Burner trips during pre-aeration.	
Air sensor faulty or incorrectly set	Increase/decrease air setting. Reduce air volume
Ignition load incorrectly set	Increase/decrease gas supply Reduce airflow
Gas pressure too low	Increase pressure. If necessary, contact gas supplier
Pulsations at start-up	
Ignition electrodes incorrectly set	Adjust
Gas pressure too high	Check and adjust using pressure gauge and pressure control valve
Flue gas side blocked	Check the chimney flue
Burner pulsates during operation	
Burner incorrectly set	Adjust
Burner dirty	Clean the burner
Incorrect chimney	Check and modify dimensions if necessary
Burner functioning properly but with occasional blockage	
Ionisation current too low	Check. Must be at least 6 μ A, but should ideally lie between 8 and 20 μ A
UV cell incorrectly positioned	Adjust
Voltage drop at certain times	Must not drop below 15% of rated voltage. Contact an electrician if necessary
Incorrectly set or faulty air sensor	Check the settings and reset, or replace
Ignition electrode overload	Replace
Burner control ambient temperature too high	Insulate for heat, Max. 60 °
Ignition spark too weak	Check the transformer
Poor combustion	
Poor draught conditions	Check the chimney

Cause of fault	Action
Flue gas temperature too high	Boiler overloaded Decrease the gas volume, sweep the chimney if necessary
CO ₂ content too low	Choke the air supply. Check the boiler for any leakages. Choke the draught if too high
CO content too high	
Surplus air when using natural gas and liquefied petroleum (propane, butane)	Choke the air supply
Poor air supply	Open the air supply. Check flue gas damper
Holes in gas nozzle clogged.	Clean
Poor fresh air intake	Check and increase
Flame at incorrect angle due to combustion head out of position	Check the combustion head and readjust
Condensation build up in boiler and chimney	
Flue gas temperature too low or gas volume too low	Raise the flue gas temperature by increasing gas volume Insulate the chimney

24. General instructions for gasburners

24.4.1 Installation

1. Follow standards and instructions applicable to the installation of gas burners
2. Ensure that the electric installation is made in accordance with existing regulations
3. Check that the fresh air intake of the boiler room is sufficiently dimensioned
4. Check by studying the data plate that the efficiency of the burner is adapted to the boiler output
5. Check that the burner is adapted to the gas quality in question
6. Check that the input pressure of the gas is correct
7. Check that the dampers of the boiler are open
8. Check that there is water in the system
9. Check that thermostats etc. are correctly adjusted
10. Read the instructions and follow the directions given for the burner as to starting-up and service

24.4.2 Maintenance

General instructions

1. Keep the boiler room clean
2. Ensure that the fresh air intake of the boiler room is not restricted
3. Switch off the current and shut off the gas supply if the burner must be withdrawn from the boiler
4. Do not use the boiler for burning paper and waste if there is no special arrangement (fire room) for this

Normal operation

1. Ensure that the air supply to the burner is not obstructed by dust and dirt
2. Have the installer make a yearly overhaul of the installation so that safety is not jeopardized
3. Have the installer at the yearly overhaul also adjust the burner to ensure optimal combustion economy
4. Check periodically that there is water in the system (fill up if necessary) and that thermostats etc. are normally adjusted
5. Ensure that there is no water or dampness in contact with the burner

24.4.3 If the burner has stopped

1. Press the reset button of the relay
2. Check that the max. thermostat has not cut out
3. Check other thermostats for example room thermostat, if any
4. Check that the gas pressure to the burner is sufficient
5. Check that the electric fuses have not blown
6. Make a new attempt to start the burner and check the counter of the gas meter to find out whether the solenoid valve opens
7. If the burner does not start in spite of repeated starting attempts call the installer

24.4.4 Shut-Off

1. Switch off the current with the main switch
2. Shut-off the gas supply with the shut-off cock on the burner

24.4.5 Warning

1. Never keep your face in front of the fire room door when starting up the burner
2. Do not use naked flame when inspecting the fire room

Authorized installer::

Address:

Telephone:

Service- and inspection card

Installation		Boiler	
Name:		Type:	Efficiency kW:
Address:		Burner	
		Type:	Efficiency kW:
Installed by:		Date:	

Date		Governor		CO ₂	CO	Fluegas temp	Ionisation current	Pressure		Efficiency
	Nm ³ gas/h							Fire room	Chimney	
		Before	After	%	%	°C	μ A	mbar	mbar	%
	Small Flame									
	Large Flame									
	Measures									

Date		Governor		CO ₂	CO	Fluegas temp	Ionisation current	Pressure		Efficiency
	Nm ³ gas/h							Fire room	Chimney	
		Before	After	%	%	°C	μ A	mbar	mbar	%
	Small Flame									
	Large Flame									
	Measures									

Date		Governor		CO ₂	CO	Fluegas temp	Ionisation current	Pressure		Efficiency
	Nm ³ gas/h							Fire room	Chimney	
		Before	After	%	%	°C	μ A	mbar	mbar	%
	Small Flame									
	Large Flame									
	Measures									

EU Declaration of conformity

Bentone Gasburners



Certificate No.	Type	Certificate No.	Type
CE-0123CT1269	BFG 1	CE-0123CT1326	BG 550
CE-0123CT1270	STG 120	CE-0123CT1337	BG 600
CE-0123CT1281	STG 146	CE-0123CT1348	BG 650
CE-0123CT1292	BG 300	CE-0123CT1359	BG 700
CE-0123CT1304	BG 400	CE-0123CT1360	BG 800
CE-0123CT1315	BG 450	CE-0123CT1371	BG 950

This declaration of conformity is issued under the sole responsibility of the manufacturer. The object of the declaration described above is in conformity with:

Gas Appliance Regulation 2016/426/EU

Machinery Directive 2006/42/EC

EMC 2014/30/EU

Restriction of the use of certain hazardous substances (RoHS) Directive 2011/65/EU

References to the relevant harmonised standards used or references to the other technical specifications in relation to which conformity is declared:

EN 676+A2:2008

(excluded Annex J/K)

Automatic forced draught burners for gaseous fuels

Additional information can be downloaded at:
www.bentone.com

Enertech AB
Box 309
S-341 26 LJUNGBY

Ljungby February 15th, 2018

Håkan Lennartsson
Managing Director
Enertech AB



